



[Mail this Page](#) to a Friend.

Density

The Zetas talk about [Physical Density](#); how this is what allows aliens to travel [Faster than Light](#); how they are actually [Coexisting](#) with us while using [Density Crossover](#) anchors; how they can occupy the [Same Space](#) and are living in an [Ocean Habitat](#) here on Earth; how it doesn't hurt to [Switch Density](#) but there are [Dangers in Shifting](#) so [Density Merging](#) is done with care; why the [Shift Mechanism](#) will not be explained fully to humans; how visitations are sometimes arranged via [Transporting](#); how the strange behavior of plants at [Landing Sites](#) is in fact a residual from density switching; how there are [Vibration Variables](#); why things disappear in the [Bermuda Triangle](#); and how this relates to [Wormholes](#).

The Zetas talk about how the [Spirit Form](#) does not change or die but is an [Eternal Soul](#); what constitutes the [Spirit Substance](#); how [Life Began](#) and if [Space Dust Alive](#); how 3rd Density worlds foster [Forming Entities](#) which are often [Aborted Entities](#) at first, and causes them to [Spark](#); how [Incarnations](#) occur naturally but [Being Conscious](#) is a necessary ingredient; the age of [Old Souls](#) and [Why Incarnations](#) are done; what happens [When We Die](#) and goes on [Between Lives](#) before our [Next Incarnation](#); whether [Crowded Incarnations](#) can occur and what determines the [Incarnation Focus](#); and how the [Soul Senses](#) and can speak to all densities through the [Mind/Spirit Connection](#) or [Spirit/Body Connection](#). The Zetas talk about the [Percentages](#) on worlds that can support life; how [Other Worlds](#) might not be what we would expect or want to visit; what constitutes a [Habitable World](#); how [Intelligent Insects](#) evolve; [Who Came First](#) and began the practice of [Genetic Engineering](#); where the [Missing Link](#) might be found and whether man was [Earth's First](#) intelligent species; how the [God Concept](#) develops; and the spiritual lessons [Intelligent Carnivores](#) can learn.

The Zetas talk about how there is [Spiritual Density](#) as well as physical density; how [Many Incarnations](#) it takes to [Graduate](#) to 4th Density during the [Transformation](#), the [Earth Switch](#) from 3rd to 4th Density; what will be [Left Behind](#) during the shift; what the [Next Stop](#) is for those not graduating and how the [Homesick](#) can return to Earth; why UFOs make [Volcano Visits](#); how higher [Density Lessons](#) are before us; how aliens in higher densities can do [Levitation](#) at will; how we will eventually spend more time [Disincarnate](#) than incarnate; whether the Pleiadeans will guide us through the [Photon Belt](#); why the New-Age term [Vibes](#) is descriptive of the era; whether [The Findhorn Garden](#) described density switching; and whether our [Intuitive Pets](#) are tuned in.

All rights reserved: ZetaTalk@ZetaTalk.com



[Mail this Page](#) to a Friend.

ZetaTalk: Physical Density

Note: written by Jul 15, 1995

Objects in 3rd and 4th Density occupy the same space, as when humans are moved through walls. What you call sub-atomic particles move at different frequencies or vibrations. They do not collide or even recognize each other. Their motion does not put them in the same place at the same time, anymore than if you were to walk through the forest. The trees are more dense in this instance, in that from your view they aren't moving at all. You guide yourself past the trees. Sub-atomic particles in 4th Density in essence flow past those in 3rd Density, as water does to obstacles in its path. Molecules in 3rd Density and 4th Density simply slide by each other, and do not interact. Thus, they can even occupy the same space. Space, in fact, is more empty than full. A planet, likewise, can and is both 3rd and 4th Density at the same time. Regarding the issue of how we travel, or move a human through walls. We are not allowed to explain fully. Suffice it to explain that we make a reservation in the vibrational density we wish to move to, and then move.

If we are moving *into* a density already occupied, we ensure a safe move by first freezing the objects in the reserved area so that *no* molecular action is occurring. It is in essence a dead stop, similar to what the soil at landing sites is exhibiting when plants fail to grow there for some time after the landing as the mineral nutrients are frozen for a time. After objects in the reservation area are frozen they are taken *into* the density we are shifting from, still in their frozen state. The receiving point is essentially in the middle of a vacuum, to minimize molecular encounters. When the frozen portions from the reservation area are at hand, we step into this same area, arrange ourselves around any object temporarily taken from the density we are moving to, and all is then quickly returned to the target density. Horrors such as occurred at the Philadelphia Experiment are *not possible* with this procedure, for if the target density is so crowded that we cannot step into the arena, we return the objects and select another spot.

All rights reserved: ZetaTalk@ZetaTalk.com



[Mail this Page](#) to a Friend.

ZetaTalk: Faster than Light

Note: written by Jul 15, 1995

Regarding how we move through space faster than the speed of light. We are allowed to explain this to you within the limitations of your ability to understand and what you are allowed to know at this time. Things are not as they seem to you. Travel is done in a different density. Where the speed of light seems the fastest to you, in 3rd Density, this is not nearly the fastest in, say, 4th Density. In 4th Density the speed of light is over 17 times as fast.

Regarding how far we have traveled. Measuring in light years or some measure that makes distance comprehensible to you would not describe the situation to you. There is a quantum leap in the speed of travel for each density leap. In addition, there are other forms of travel which we are not allowed to explain to you. Suffice it to say that if you compare the Universe as known to us, the Zetas, to your local neighborhood, then the Universe not visited by the Zetas is your Solar System. Using this comparison to show you our range, as compared to yours, you, in all the knowledge you have of the galaxies around you, have never left your house.

All rights reserved: ZetaTalk@ZetaTalk.com



[Mail this Page](#) to a Friend.

ZetaTalk: Coexisting

Note: written by Jul 15, 1995

Regarding whether 3rd Density and 4th Density entities can be in the same room at the same time. This indeed can and does occur. How is this possible? These entities in fact do not see each other, because the one in 4th Density has its molecular structure moving faster than the other. In all cases where aliens are contacting humans, there is some of this occurring, for instance, when space ships are in 4th Density in your atmosphere but are not seen by humans. When the alien entities wish to be seen, they move their space ships into 3rd Density, zip about, and then return to 4th Density to disappear. Another instance is where aliens are in 4th Density, whether in their space ships or in residences near Earth. When they wish to be visible to humans, they move into 3rd Density for the conference. Then, as soon as possible, as they wish for their comfort to be returned, they return to 4th Density.

Your planet is entirely 3rd Density now, but will move over the next century into 4th Density. However, there may be parts of the planet, for administrative reasons, that still function in 3rd Density spiritually. These areas would need to be physically quarantined, as in underground structures, for a partial 3rd Density spiritual planet to exist.

Those alien groups visiting the Earth are almost without exception from the 4th Density. Some higher density entities are here on Earth, but in doing so interact with humankind in the same manner as 4th Density entities, so the description we will be giving to you applies. We are not, in this discussion, referring to 4th, 5th, or 6th Density entities who have chosen to incarnate into human form in order to assist in the Transformation. These entities are in 3rd Density, however heavy this might feel to them. Those in 3rd Density, who have experienced existence in a higher density, have returned to a time in their past. They are used to higher frequencies, more motion and greater allowance for movement and thought. To return to a lower density is commensurate with a human going into the water, to assist dolphins, even though the pressure of the water would feel weighty upon one. Now, these visiting higher density entities, who are here to contact humans as The Call might be given, prefer not to be in the heavier 3rd Density anymore than necessary. They move into 3rd Density to be visible to humans, and then get the heck out. Thus, humans perceive them to be disappearing.

All rights reserved: ZetaTalk@ZetaTalk.com



[Mail this Page](#) to a Friend.

ZetaTalk: Density Crossovers

Note: written Aug 15, 1996

We have mentioned that the stuff of souls, the substance spirits are composed of, transcends all density levels as it can interact with what humans call the physical world on all density levels, simultaneously. Most humans are at best newly formed entities incarnated into an intelligent body native to the Earth. Both the entity, or spirit form, and the human body newly emerged into consciousness are aware only of the corporeal world around them. They naturally think this predominant. It is not. Those formed entities who have experienced thousands of incarnations and have begun to interact with entities from other worlds are aware of the spirit world also. But until an entity has arrived at higher density levels and themselves has been at the helm during density shifting, they are only superficially aware of how vast the Universe actually is.

Corporeal existence is but a *layer* in the total strata, and there are more substances than the stuff of souls that can transcend the corporeal layers. Thus, when we switch ourselves and our ships and our contactees between 3rd and 4th Density, we can remain anchored to the spot where we wish to return. These anchors are so accurate and certain that we can even remove a contactee from their clothing, examine them in the nude, and return them back within their clothing with narry a strap askew or sleeve rumped. Likewise, our 4th Density underwater residences on Earth and our 4th Density dome homes on the surface of Mars are firmly anchored to their locales on these planets. Density crossovers are not substances humans are aware of, but coexist everywhere in the Universe along with corporeal substances and the stuff of souls.

All rights reserved: ZetaTalk@ZetaTalk.com



[Mail this Page](#) to a Friend.



ZetaTalk: Same Space

Note: written by Jul 15, 1995

Different densities means that simultaneously, in the same spot, several realities can occur. We have spoken of 1st Density through 6th Density, and inferred that there are higher densities humans really need not be concerned with at this time. 1st Density through 3rd Density occupy the same plane, i.e. reside in the same reality together. 1st Density is rock and water, without life. 2nd Density is life without conscious intelligence, such as plants and animals, even such intelligent animals as chimpanzees. 3rd Density is intelligent, conscious, life, such as humans have. 1st and 2nd Density are referred to as densities not because they are truly of differing density states, but because they indicate different levels of spiritual potential. Density is a term that refers not only to the physical state, but to the spiritual. Thus in 1st Density the spiritual potential is nil. In 2nd Density, the spiritual density potential is possible, and in fact at times incarnations into 2nd Density life occurs, as a lesson. In 3rd Density, spiritual potential is realized, etc.

In densities higher than 3rd Density, co-existence can occur. Thus, it occurs that on the planet Earth, where 3rd Density humans are living and walking about, 4th, 5th, and higher Density incarnations are living and moving about, occupying the same space, as it were. This occurs because of a higher vibration rate of the sub-atomic particles. Were one to travel rapidly through the densities occurring in a single spot, one would see first the 3rd Density existence on the 3rd Density Earth, with say a human standing in a field of corn; then, moving to 4th Density existence one might see, for instance, a Zeta standing in a forest, where the forest and the Earth it grows upon are both in 4th Density; then, moving to 5th Density, one might see yet another scene. When we state that the Earth is scheduled to move to 4th Density Service-to-Others, we are describing what is to happen to *humans*. There will still be a 3rd Density Earth, on the same plane as the future 4th Density home of humans, as a portion of the Earth will be left in 3rd Density.

Much confusion reigns on the issue of density. Humans, for instance, were used to the concept of matter and energy being discrete and separate. Matter could not be energy, and energy could not be matter. Then Einstein shook things up and humans, after much painful denial and agony, allowed their concepts of reality to change. Density understanding is just such a quantum concept leap. In all fairness, the concept of density differences is difficult for even your scientists to deal with. The layman should be excused and granted a little confusion.

All rights reserved: ZetaTalk@ZetaTalk.com



[Mail this Page](#) to a Friend.

ZetaTalk: Ocean Habitat

Note: written Aug 15, 1995

The Earth has 17 different species, who are visiting Earth during the Transformation, living either within or under the seas. These alien species are not living in 3rd Density - spiritually or physically. They occupy the sea floor or the waters in 4th Density, so essentially, as far as humans are concerned, they do not exist. Why the seas? Because the depth of the sea floor places them closest to the center of a formulated center of the Earth, in 4th Density. We say formulated, as the Earth today is *not* in 4th Density, and thus these species are essentially floating in space, connected to each other in a sort of mesh or web. Why not simply occupy what would be the center of the Earth, or create a 4th Density space station, or perch on the Moon? Where 3rd and 4th Density substances do not interact, attempting to live within the hot, heavy, molten core of the Earth would be, shall we say, a drag. It places a burden on the 4th Density substances, and results in something like a chronic headache.

Being in or under the seas makes for an easy transition to and from 3rd Density, during visitations or contact in the form of sightings. Coming in from outer space is more complicated, especially as your governments consider this an arrival and departure. In the seas, these alien species are simply having one long stay.

All rights reserved: ZetaTalk@ZetaTalk.com



[Mail this Page](#) to a Friend.



ZetaTalk: Switch Density

Note: written by Jul 15, 1995

Regarding what it feels like to move from 3rd Density to 4th Density. This will be scarcely perceptible. There is no pain. There is no sensation. The impact is not from the entity's physical body, which moves as a whole to the other density, but from the surroundings. Bear in mind that we, the Zetas, move ourselves between densities often in our work. We also move humans between densities frequently, during our endeavors. Humans sometimes recall these instances, and state with amazement that they moved through walls or the like. They are adjusting to their surroundings. The move between densities is graduated, so that a move is not necessarily complete. If physical barriers are to be overcome, we, the Zetas, can alter our or human densities slightly, so that communal passage between what would be considered solid objects is possible.

Let us state simply that in changing to 4th Density, as the Earth will, shortly, humans will not be aware that anything has happened. Spiritually the humans may feel more aware of other's feelings, as though spirituality increased in all those around one. This will not be understood to be a density change in most humans, who will ascribe the change to other influences.

All rights reserved: ZetaTalk@ZetaTalk.com



[Mail this Page](#) to a Friend.

ZetaTalk: Dangers in Shifting

Note: written Sep 15, 1995

Most incarnated entities experience a density shift once, when moving to the next higher density during a Transformation. But those busily at work trying to effect the process or outcome of a Transformation may experience repeated density shifts as they move into the lower density for conferences with the transforming group and back up again to their accustomed density. Such is the situation with ourselves as we are normally in 4th Density, living nearby in undersea installations, but move into 3rd Density to continue the hybrid program or confer with our contactees - almost a daily affair. Does all this density shifting take its toll? Yes and no, depending on the circumstances. There are dangers, and thus our status as volunteers during these transformational endeavors carries with it the classification of hazardous duty.

What are the dangers? First and foremost there is a danger of not making a complete transition, of being partly left behind. This can happen when the coordinates are not set properly, a matter we attend to with the utmost care. These coordinates are essentially boundaries, but boundaries are defined as more than the periphery. Boundaries include chemical composition, molecular structure, and connectedness. A simple example of a chemical composition boundary would be moving acidic material but leaving behind inert or alkaloid material. A simple example of a molecular structure boundary would be leaving behind radioactive material in a slag heap but moving all else. A simple example of a connectedness boundary would be moving all of a table but leaving behind the chairs, floor, and table cloth.

Density shifting dangers are usually encountered early on in an entity's experience with such matters, and leave a memory not soon forgotten. The true stories about the Philadelphia Experiment and the fictional movie *The Fly* are not far from the horror that can happen when the necessary knowledge or proper care are not in place. We take care not to touch one another or our contactees during the shift. We take care to include all parts of the object to be moved within the boundaries. We have a series of overlapping and redundant computerized and manual checks and balances that make the safety of the shift virtually fail-safe.

There are positive aspects to the ability to set partial boundaries, however. This is the mechanism by which we will leave behind tapeworms, mosquitoes, and many viral or bacterial diseases when the shift to 4th Density occurs during the Earth's Transformation. Markers peculiar to these living organisms will simply not be included within the boundaries.

All rights reserved: ZetaTalk@ZetaTalk.com



[Mail this Page](#) to a Friend.

ZetaTalk: Density Merging

Note: written Jun 15, 1996

During density switching, which alien visitors and their ships and even their contactees are doing regularly, the mass being switched is relatively small. The switch, as we have explained, is done by making a reservation in the density receiving the mass, so a collision is avoided. But during massive switching, as will occur during the Earth's Transformation to 4th Density, other procedures are involved. There is, at the present time, nothing in 4th Density in the Solar System except alien visitors and their paraphernalia. This is moved aside. Then the switch will be made, and then the alien visitors will migrate back, setting up housekeeping in different places.

All rights reserved: ZetaTalk@ZetaTalk.com



[Mail this Page](#) to a Friend.

ZetaTalk: Shift Mechanism

Note: written Aug 15, 1996

We are not allowed to describe in great detail the means by which we shift densities. Humans on their own could not arrive at the means, but beyond this lack of capacity entities currently in their 3rd Density existence would be unable to deal with density shifting without creating disasters, as the Philadelphia Experiment demonstrates. Thus, where humans may at this time understand some of the factors, and have documented the results in places such as the Bermuda Triangle where density shifting occurs naturally, they do not have enough pieces of the puzzle to even begin to see the picture. In this explanation of the means by which we shift densities, therefore, we will give only a general description and be vague at certain points.

Density shifting occurs in nature, and on some worlds or under certain circumstances occurs frequently. Your world, Earth, experiences this only intermittently at breaks in the Earth's crust where byproducts of the compression in the Earth's core escape. These places on occasion find themselves in a flood of these byproducts, and temporary shifting occurs. On worlds where density shifting occurs frequently 3rd Density existence is not possible. These are dead worlds. Life dies when part of an organism is affected but the other parts are not. At best, one cell organisms survive.

Deliberate density shifting is an adaptation of what occurs naturally. Rather than a complicated affair, it is remarkably simple. The complexity lies not in effecting the shift, but in managing the perimeter. As we have explained, the subject of a shift can be as selective as a DNA construct or as general as everything within a defined area. How we select or define what is to be shifted will *not* be described further. Once deliberately shifted, the subject of a shift *remains* in the target density until shifted back. It does not drift, due to our attention to the perimeter during the select and define process. In shifting large areas, such as will occur when your world goes through its Transformation, the same mechanism is used. If one wishes to wash a tiny area one uses a tiny hose with a pin-point nozzle at the end and uses a steady hand or allows the directed flow to be under the control of a computer, a steadier hand. If one wishes to wash a large area, such as when hosing out a fire, one does not concern oneself with precision as much as maintaining the volume and force of the flow.

All rights reserved: ZetaTalk@ZetaTalk.com



[Mail this Page](#) to a Friend.

ZetaTalk: Transporting

Note: written Sep 15, 1996

Density switching involves more than simply increasing or decreasing the vibrational level of the object to be moved, it can also involve moving from one point in space to another, or one point in time to another. Thus, a contactee can be picked up for a conference, taken to another place for this conference, and returned after the conference to the same place and time as the pickup point. To the contactee, who has *not* experienced missing time, nothing ostensibly has happened, yet the contactee returns with the conference recorded in his subconscious. Should there have been a medical procedure during the visit, the contactee's body retains the result of that medical procedure upon return. This method of arranging visits is obviously more complicated than simply picking the contactee up from a point in the woods or asking them to walk out of their bedroom into the back yard so that they can experience a bit of missing time. here density switching is not involved, nor manipulation of time or space. Being less complicated, this method is most often used during a visit. However, there are special times when transporting is used.

- If a contactee is extremely busy, so that arranging a bit of missing time is either a burden or a frank impossibility during the day, transporting from one point in space and time to another may be used to arrange a meeting. Such a transport may or may not involve a density switch, depending upon the density where the others to be present at the meeting currently reside. If the meeting is with a number of alien visitors in 4th Density, the contactee will be moved to that density for the meeting. The return to the point in space and time is so exacting that the contactee may be picked up naked, and be returned into their clothing, unruffled.
- If a hybrid fetus is to be extracted from a donor mother's womb, and for reasons of health the donor mother should not experience the usual vacuum extraction method via the birth canal, then the fetus can be transported. This is done by locating the fetus within the mother's tissue by DNA signature, and targeting that tissue and some surrounding tissue from the mother to be transported. The perimeter is defined in such a way that the mother's womb is barely affected but the fetus is kept snug until an alternative womb can be placed around it.
- In extreme cases transporting is used to turn back the clock. These rare cases are where the permission granted by the Council of Worlds has gone beyond allowing transporting due to a contactee's busy life or a donor mother's health, as the Council has deemed the situation important for the Earth's Transformation. An example is where a situation such as the death of someone of key importance has occurred, by accident. If permission is granted, the individual may be transported from the point before death to the present, and properly attended to so that death will not occur. Such intervention is not possible if the death has been broadcast, but is possible if few know of the death.

All rights reserved: ZetaTalk@ZetaTalk.com



[Mail this Page](#) to a Friend.

ZetaTalk: Landing Sites

Note: written by Jul 15, 1995

Regarding the impact spaceships from other dimensions have on the physical Earth. These are phenomena unknown to Earth's scientists, and a puzzle. However, this puzzle has a simple key. Life forms, such as seeds, present or yet to arrive on the soil's surface, require nutrients. To germinate, they require water, wherein they rely on the nutrients within the seed for their first tentative germination efforts. After establishing a minimal root, the germinating plant seeks not only water, but nutrients. Lacking either of these, the germinating seed dies. Life is started, but starved early on.

In the case of the landing spot of spaceships from another dimension, the lack is not water, but the availability of nutrients. How are the nutrients withheld, when the surrounding soil has no such problem? This is due to prior obligations - where the atoms are pre-obligated to certain interactions. This is a concept unknown to Earth scientists at this time. However, it relates to density switching, a concept which they are also unfamiliar with.

When moving into another density, as from the 4th Density to the 3rd, in order to appear within the consciousness of humans, several steps are required. One is to reserve a place in the density to be moved into. This reservation places a lock on atoms in the density to be moved into. The lock is overpowering enough to freeze activity in the general area, for non-intelligent actions. However, for intelligent actions, such as those under the direction of humans, or even semi-intelligent actions of animals such as mammals or reptiles and birds, this lock can be broken after having been set. Plants do not have the power to break this lock, of their own accord.

How does the lock then get broken, after so many seasons where growth does not occur in the soil so affected? The original reservation for the time/space in the density to be moved into has parameters, where a maximum of time is given. When this time reservation runs out, or expires, the nutrients held in a lock are freed, and the normal interaction occurs. Seeds now germinate and find nutrients awaiting them, and life returns to normal.

All rights reserved: ZetaTalk@ZetaTalk.com



[Mail this Page](#) to a Friend.

ZetaTalk: Vibration Variables

Note: written Jul 15, 1997

The switch from one density to another has many nuances, so that objects in 3rd Density can seem to disappear while in the Bermuda Triangle, for instance, and then reappear, all the while being essentially in 3rd Density. Likewise, we can move contactees through walls or window glass by slightly switching their density, but other humans in 3rd Density can observe this occurring. When the physical switch to 4th Density occurs for Earth and its Moon and Sun, the switch will *not* be gradual, so that no swinging back to 3rd Density will occur. It will be sudden and complete. The variability of density can be seen in the range of vibrational frequency that sub-atomic particles sustain. For instance, the speed of light is *not* the constant that most of mankind assumes it to be, and the speed of slower moving particles has long been a variable in mankind's equations.

All rights reserved: ZetaTalk@ZetaTalk.com



[Mail this Page](#) to a Friend.

ZetaTalk: Bermuda Triangle

Note: written by Jul 15, 1995

The Bermuda Triangle does indeed have unusual qualities, as do other places here and there on Earth. Magnetic anomalies are reported, where compasses swing wildly, clocks stop, and concrete objects fade from sight. What's causing this? These places, fortunately few in number, are an outlet from the center of the Earth for a byproduct of the Earth's compression, a gravity byproduct so to speak. A vent, from where subatomic particles not known to man surge forth periodically, and woe be to the man or fish who finds itself in the way. There are stories of ships and planes disappearing, and it is assumed they were carried off by extraterrestrials, taken off to a far-off zoo, for exhibition. Then why would these only disappear from such sites, and not regularly around the globe?

Here and there around the face of the Earth are similar outlets for this byproduct of the Earth's compression, many of them well known due to the havoc shippers or travelers experience - an area off the coast of Japan, and in one of the Great Lakes, for example. Such outlets also occur where man is unaware of them, as in the depths of the oceans or within inaccessible mountain crevices. What determines the outlet is not only the surface structure of the rock, fractures in fact, but also the structure of the underlying rock, factors man cannot measure.

All rights reserved: ZetaTalk@ZetaTalk.com



[Mail this Page](#) to a Friend.

ZetaTalk: Wormholes

Note: written Apr 15, 1996

Wormholes do not exist. They are a figment in the imagination of scientists, just as the mythical quark, which is supposed to make their formulas whole. Faced with perplexing natural phenomena, such as occurred during the Philadelphia Experiment and temporary disappearances that occur naturally in sites such as the Bermuda Triangle, human scientists have invented a term for what they imagine are portals. The portals, in their thinking, can be either man-made or a natural occurrence. They reason that if the phenomena, a temporary and partial density switch, occurs naturally in the Bermuda Triangle, then it should occur naturally in space. They speculate that perhaps this is the magic that allows aliens to transport themselves long distances in what seems to be a flash. Humans take advantage of natural phenomena, such as updrafts for the flight of gliders or orbits to position satellites, and they reason aliens have done the same.

The switch to 4th Density from 3rd Density is not that simple, and does *not* occur naturally here and there within 3rd Density in any but temporary situations. The density confusion that occurs in the Bermuda Triangle is fleeting, and is caused by the compression within the core of the Earth. Does this line up with what is out in deep space? Wormholes simply do not exist.

All rights reserved: ZetaTalk@ZetaTalk.com



[Mail this Page](#) to a Friend.

ZetaTalk: Spirit Form

Note: written Aug 15, 1995

The stuff of souls is something of a mystery to we, the Zetas, and we cannot entirely answer the question. We have been told the process of soul building, and participate in being Spirit Guides and Birthing Envoys. We have experienced our own incarnations, and in many cases become very aware of our past lives. Yet there are mysteries *not* explained or answered to us in 4th Density, for whatever reason God's plan entails. Thus, the base question of *why* God has chosen to create the Universe, or have it operate as it does, is not ours to answer.

What density is our spiritual form in? The substance that composes the spirit is not of the same substance that composes the physical world. Where the physical world of 3rd Density cannot sense or interact with the physical world of 4th Density, due to their vibrational differences, entities in spirit form transcend these physical barriers and can interact, and the reason is simple - the spirit has only one density, so all are in touch with one another. Does this mean that an alien moving into 4th Density during a visitation on Earth can still spiritually interact with the contactee? Absolutely. This is exactly what it means. Do not entities in light form greet 3rd Density humans experiencing a Near Death Experience? When we speak of spiritual densities, we are referring to moral or growth levels, not a form of physical density.

Humans who have what we have termed virgin souls, those first congealing in the consciousness of the human, are no less able to communicate with other souls than old souls. The issue is not their ability, as a virgin soul, but for want of a better term, their *weight* and *mass*. Old souls have an equivalent of the human brain's tendrils, connections, and number of brain cells. They live on because of this, the complexity of interactions and memories that hold the soul together. Young souls that dissipate because of lack of what we have termed a spark, have few connections, few substantial memories that *create* connections, and thus there is in essence nothing *there*. However, during the lifetime of this virgin incarnation, the soul that *IS* there can communicate with other souls, and thus is part of what is commonly termed the collective subconscious. They, however, ask more questions than give answers, and have few insights, so are more the receivers than the transmitters.

The world in which an entity evolves upon *does* made an imprint on the entity, that has a strong but not dominant effect on it's future. This is an easy concept for mankind to relate to, as the culture that they come from determines their outlook, how they interact with others, and the restrictions they impose upon themselves. However, just as humans find they become citizens of the *world* during travel, or living and working abroad, just so souls incarnating into other lifeforms find they have a common bond and base with other souls. Evolution into higher spiritual densities is akin to world travel, in the human experience, a rich tapestry of encounters with fascinating cultures and attitudes. Each learns from the other, and grows. And eventually, the experiences of *all* are the experiences of *each*. Where is leading is part of God's plan, and not something we can speak to with experience or knowledge.

All rights reserved: ZetaTalk@ZetaTalk.com



[Mail this Page](#) to a Friend.

ZetaTalk: Eternal Soul

Note: written Dec 15, 1995

Is the soul immortal? In that it surpasses human mortality and steadily grows, learning and increasing in mass and wisdom with each incarnation - it is immortal. But what is mortality for a soul? It is born, in a manner of speaking, on 3rd Density worlds where it forms within creatures intelligent enough to offer the spark. Forming entities react to their surroundings, and as the stuff of souls is everywhere in the Universe, forming takes place to some degree in many living things but dissipates for lack of a spark. Like pollen that cannot grow unless moved by an external agent, a bee or the winds, forming entities in moss or bugs or tall trees or birds is a potential only, and dissipates when the life form dies.

Worlds are seeded with life and later seeded with intelligent life, a genetically engineered variation of a native species, so as to give forming entities a leg up. Intelligence is the spark that causes forming entities to build to the point where they do *not* dissipate, as they themselves have become alive. We have mentioned that souls do not die during nuclear explosions, nor do they lose themselves in Black Holes. Entities are of material that can affect its surroundings while remaining untouched. The stuff of souls does not feed, nor does it expend itself. It influences its surroundings by *manipulation* of its surroundings, like a puppet master pulling strings, rather than expending its resources like an audience throwing tomatoes. Souls, once formed, do not die. They may grow rapidly or slowly, may stagnate or plateau for a long time or forever, but they do not die, nor do they shrink. Beyond this, we cannot say, as we ourselves know no more.

All rights reserved: ZetaTalk@ZetaTalk.com



[Mail this Page](#) to a Friend.

ZetaTalk: Spirit Substance

Note: written Mar 15, 1996

What humans refer to as the soul, what is sometimes called the spirit or which we refer to as the entity, is not what is supposed by most humans. They imagine a vapor, something that can move through walls like a ghost, something without substance that seeks to influence the physical world around it with little success. They realize the soul can remember, as past lives are recalled, but do not imagine that a physical brain is required. The view that humans have of the soul is, as could be expected, the view from the human vantage point. What is missing from the vantage point is the ability to *see* the soul, as the substance is not something that the human eye can perceive.

The soul *has* substance, and grows in bulk early in its development as many incarnations, many lives, are experienced. This bulk cannot be gauged by humans, who look upon one another as having equal souls, when nothing of the kind is the reality. Some souls are so tiny and poorly constructed that they dissipate after the incarnation, what we term aborted entities. This type of soul may be present in many animals and even some plant forms, as the stuff of souls is dispersed throughout the Universe and incarnations happen naturally. Where the human eye cannot gauge the mass of another soul, the spirits gauge this very well. You know instinctively that another is old and wise. Spiritual growth occurs most rapidly early on via incarnations, but later this growth proceeds based on experiences *outside* of incarnations, and incarnations are not needed for this purpose. Incarnations continue to be used as a learning experience, however, from time to time.

The soul not only has memory, it does not forget. It is not by accident that intelligent life forms have nerves, brains, and memory in the form of chemical impressions. It is not by accident that this same structure is found for intelligent thought on all density levels. It is intrinsic to the way the Universe is structured, and thus souls likewise have such structures. The stuff of souls is simply another density level, one that touches on all the others. It is finer and more durable, at the same time. It could be called the base of matter, in that regard, as it permeates all levels where matter can reside. Intelligent life forms come in many shapes and sizes, but all have brains and nerves. Thus a soul can incarnate in a hominoid at one point in its development, and into quite another life form during another incarnation, without any adaptation required.

The soul does not require food or nourishment as physical life forms do. The human animal cannot retain its shape without fuel, without maintaining a certain temperature and replacing damaged or consumed biochemicals. It must eat to survive. Souls do not require a temperature maintenance, and by their nature maintain their own chemistry, the only outside reach required is to acquire more of the stuff of souls, present everywhere in the Universe, when growth in bulk is occurring.

All rights reserved: ZetaTalk@ZetaTalk.com



[Mail this Page](#) to a Friend.

ZetaTalk: Life Began

Note: written Apr 15, 1997

With all the talk about seeding planets with life bearing potential to give them a start and genetic engineering of species with conscious intelligence potential to boost the potential for sparking forming entities, the reader might think that life does not *begin* without an assist. This is of course not the case, as how did life *first* begin if not by a natural course.

- There are sectors of the Universe forming from a big bang where existing intelligent entities do not travel as the chemical mix there would be poisonous to them, and beyond the impossibility of travel no DNA implanted would survive! Life begins there and evolves to intelligent species all without assistance, and until the entities are mature enough to converse with other sans bodies, communication with those entities elsewhere that still require incarnations is at a standstill. Administration of these parts of the Universe is conducted by wise and massive entities who operate in light form.
- There are seeded planets where life begins *not* from the DNA implanted, but rather with DNA that evolves naturally. Those who seeded the planet return to check on their handiwork and find a surprise. Likewise the genetic engineering of intelligent species can take surprising turns. It sometimes happens that the species selected as most likely to evolve and given a boost dies out and another becomes the dominant intelligent species, or perhaps a contest ensues and the species selected by the visiting engineers is not the winner. Natural evolution is dictating the outcome in these matters.
- Where life is complex, it is built of simple building blocks. As with the child's game of Lego, where a single oblong building block with multiple connection points on its sides can create vast structures, just so each component of DNA with limited abilities to bond with other components in and of themselves, can form complex strands. There is complexity *not* in the bond itself, but in the resulting strand, which has the capacity to replicate itself due to the tendency of chemicals to arrange themselves along the strand in accordance with the pattern already established.

All rights reserved: ZetaTalk@ZetaTalk.com

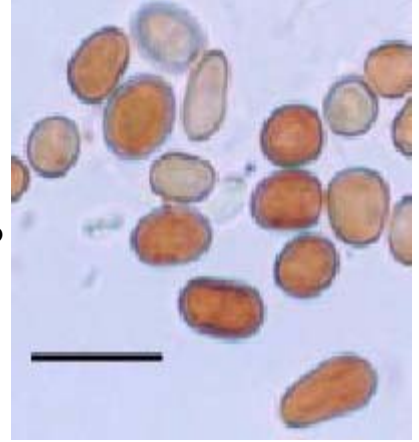


[Mail this Page](#) to a Friend.

ZetaTalk: Space Dust, Alive?

written Jan 6, 2006

Life, of course, is everywhere, as we have explained, emerging on [diverse worlds](#), carbon or silicon based or emerging on worlds humans would consider [too poisonous](#) for life. Gaseous planets support life, on occasion, nor is DNA, per se, required. Crystals develop, start and grow, but are not considered life. Why? Because mobility is utterly lacking, and thus any ability for conscious thought as independence from the environment is not possible. A tree lacks mobility but is alive, because it reacts to attacks against itself by healing its wounds and seeks to perpetuate itself by leaning into the sunlight. Life defends itself, perpetuates itself, and seeks to grow by accumulation. With mobility comes intelligence, scarcely needed otherwise. With intelligence can come consciousness, the awareness of the self as distinct from other life. We have stated that life [evolves naturally](#) on many planets, those that can sustain life, and the numbers are far beyond what man imagines possible. Some type of liquidity is invariably a necessity for the start of life, so the chemicals required can encounter each other. This may be a liquid or a gaseous state. That said, why would dust from a meteor appear to be alive, a form of life in any case, cellular?



Most of the meteors that sling past Earth are from the solar system, despite what human astronomers declare. As we have stated, comets, the dirty snowballs that outgas brilliantly as they round the Sun, are vestiges of a couple dozen planets that rode the Asteroid Belt in the past, water planets almost to a one, and lifebearing. The Asteroid Belt holds the majority of the magma from those planets, which burst into space and hardened into odd shapes. If life had begun, on all those planets, what stage of development were they in? Life, whether it evolves naturally or is seeding to expedite the process, does not develop in a day. It develops in steps and stages. One stage is in place before the next step can be taken. DNA supports the ability of life to replicate itself and carry forward the dictates of biological function. Since man comes late to examining his own beginnings, he cannot determine if DNA arrived before the cell, or the cell was in place before the DNA. The assumption is that DNA came first, links forming in some kind of primordial soup, and the cell developed later as a protective device. Now, they know otherwise.

DNA in a soup would be subject to assault, continually, and thus not perpetuate itself with any certainty. Life does not develop in chaos, but rather where a soup with rich ingredients exist. Complex molecules form in nature, as an example, the [petrochemicals](#) that form over the heat of volcanoes, or during lightning storms. The cell body does not dissipate without DNA, as human scientists know. It feeds, and continues. It does this without assistance, as long as the soup it finds itself in allowed growth. Death of a cell occurs only when it is attacked, exposed to attack, so that the molecular functions that allowed it to form and retain form are disrupted. The evidence dropped to Earth was encased in an asteroid chunk that protected the molecular composition of these cells from the formerly life bearing planets in the Asteroid Belt. They thus had no reason to die. But as the shape clearly presents, this was a stage of life prior to DNA insertion, the next stage. DNA naturally forming in primordial pools needs a nest, a shelter. With cells about, it can migrate through the skin of a cell to interior chambers, which it does today. Is this not what the virus does, when infecting a cell? Is this not what RNA does when it travels between cells, communicating?

Signs of the Times #1529

Skepticism greets claim of possible alien microbes [Jan 5] <http://www.world-science.net/> 'A paper to appear in a scientific journal claims a strange red rain might have dumped microbes from space onto Earth four years ago. At least 50,000 kg (55 tons) of the particles have fallen in all. People on the streets found their cloths stained by red raindrops. In a few places the concentration of particles were so great that the rainwater appeared almost like blood. The particles look like one-celled

organisms and are about 4 to 10 thousandths of a millimeter wide, somewhat larger than typical bacteria. The particles seem to lack a nucleus, the core DNA-containing compartment that animal and plant cells have, the researchers wrote. Chemical tests indicated they also lacked DNA, the gene-carrying molecule that most types of cells contain. The outer envelope seems to contain an inner capsule, which in some places appears to be detached from the outer wall to form an empty region inside the cell. Further, there appears to be a faintly visible mucus layer present on the outer side of the cell. The major constituents of the red particles are carbon and oxygen. Carbon is the key component of life on Earth. Silicon is most prominent among the minor constituents of the particles; other elements found were iron, sodium, aluminum and chlorine. The red rain phenomenon first started in Kerala after a meteor airburst event, which occurred on 25th July 2001. Alive or dead, the particles have some staying power, if the paper is correct. Even after storage in the original rainwater at room temperature without any preservative for about four years, no decay or discolouration of the particles could be found.'



[Mail this Page](#) to a Friend.

ZetaTalk: Forming Entities

Note: written Nov 15, 1995

In the beginning, each forming entity is aware only of themselves. Self awareness is a constant state in all life of whatever form, but at the start this is the *only* state. Forming entities are placed into 3rd Density incarnations, repeatedly, to hasten the 3rd Density lesson - orientation determination. Whether incarnated or not, forming entities first become aware of others based on the effect upon the self. Is the effect pleasant or unpleasant, dominating or acquiescing, desired or resisted. Incarnated or not, social interchange has begun. Sense of the other is also born in this context, not only in awareness of the partner in social interactions, but by observing others undergoing a similar experience. Empathy is in essence the statement, "I was once there, and I understand." Within 3rd Density there is first self awareness, second reacting to the presence of others, and last the capacity for empathy.

In making the orientation determination the entity choosing Service-to-Self is not so much progressing *towards* this determination as clinging back. They remain most comfortable with self awareness, and react to others in this context, essentially asking "What can you do for me?"

Interactions between entities change and become more complex during spiritual 4th Density, and many entities completing their 3rd Density existence are already operating in this mode. Following the development of the capacity for empathy comes the determination to intercede, to rescue, and as an adjunct to this determination the entity begins cooperative efforts, the sum being greater than the parts. Complex social interchange presents forming entities with situations requiring compromise if goals are to be met, and the need to subjugate personal desires so that another might be rescued or the group as a whole might benefit. While the entity leaning toward the Service-to-Other orientation moves steadily in this direction, the entity leaning toward Service-to-Self reacts to this greater social complexity with more of the same old reaction, "What's in it for me." As entities surrounding the emerging Service-to-Self entity are learning compromise and conciliation, the technique for the self focused entity to gain more for the self is essentially manipulation. Since groups of emerging Service-to-Other entities are forming, the emerging Service-to-Self entity tunes its manipulation skills so as to manipulate groups, too.

The orientations, even within 3rd Density, set upon different paths, and polarization increases as they progress.

Arriving in 4th Density, the fledgling entity thus is already reacting and responding to others, pressing forward with personal agendas and dealing with interpersonal conflicts. How does life in 4th Density differ from what the entity has experienced in 3rd Density? For the Service-to-Self their spiritual existence is essentially frozen while their intellectual existence progresses. For the Service-to-Self there is even less interplay and manipulation between entities than took place in 3rd Density. A rigid hierarchy with rules for everything emerges so that the lessons can proceed. For the Service-to-Other entity their spiritual wisdom continues to grow and augments rather than detracts from their intellectual progress. Skills in team efforts, where the individual is not required to sacrifice but can learn and grow while contributing are honed. Where the focus at the beginning of 3rd Density was self awareness, by the end of 4th Density in the Service-to-Other orientation the focus has expanded to be on group awareness.

All rights reserved: ZetaTalk@ZetaTalk.com



[Mail this Page](#) to a Friend.

ZetaTalk: Aborted Entities

Note: written Dec 15, 1995

Does it happen that an incarnation in an intelligent species does not result in a forming entity? Most definitely, and this happens frequently in the early stages. The spark is not lit, and after death dissipation occurs. Souls spark or do not, and mostly do *not* in a virgin incarnation. The stuff of souls gathers in a conscious being, because it finds the environment interesting. *Some* formation occurs, during the incarnation, but if the life has not been challenging then it has not massed, and is prone to dissipation upon the death of the human. This essential abortion is not due to any action on the part of the birthing envoys, who are there to gather what emerges, but rather to lack of action having taken place within the body. Thus, those aliens assisting will be gathering the *solid* souls, who do not dissipate, and taking them to new incarnations. Once formed, however, entities do not dissipate. Failure to form is due to a lazy or indolent lifestyle, lack of native intelligence, or lack of stimulation. In this regard, the challenging, stressful life is a benefit, rather than a drawback.

Challenge can be viewed as puzzled to be solved, or very emotional situations, or situations requiring much determination. Thus, a child crippled, determined to continue his role in the group, will *be* working a challenge, a puzzle, that requires mental work as well as emotional accompaniment. At times, a soul sparks in a virgin incarnation when the human is old, is longing to help young mothers and their infants but barely able to do so because of infirmity. At other times, as in the crippled child, the opportunity for sparking comes early, and strengthens throughout the life. As we have stated, being born beautiful, and having a life without cares, is *not* the strongest motivator for spiritual growth! Incarnations into crippled or afflicted bodies indeed happens even during 4th Density, and is not avoided at all, as such an incarnation is viewed not only to be an assist, on occasion, to the entity but an opportunity for those about him.

Helping others to spark, or develop into Service-to-Other, is a challenge such that the Spirit Guides are busy. Those humans wishing to assist others in their spiritual development are advised to *not* help everyone out with their problems, let *them* devise a solution. Also, focus on the interesting part of the challenge, not always bemoaning what has befallen. Focus on the overall well-being of the group or environment, the assist that the new one has made, to instill pride and motivation. The stuff of souls congeals in conscious beings as it is interesting. It is more an issue of attraction to an environment. The stuff of souls has this innate nature, to *begin* with. Souls have the mental capacity the human brain does, and more. It does not forget! And it thus can think and decide, indeed does so and argues at times with the human incarnated.

All rights reserved: ZetaTalk@ZetaTalk.com



[Mail this Page](#) to a Friend.

ZetaTalk: Spark

Note: written Jun 15, 2002

Unsparked souls are fuzzy, aware of themselves as separate entities from other humans or animals, but basically dazed and wandering about, gap mouthed. They are taking it all in, as the first passage, the first tour, the first time visiting a place. Unless some matter occurs to *spark* a soul, such as empathy for another in distress and a choice to sacrifice comfort of the self to assist the other, no sparking occurs. A lazy life, lived in a local indolent with simple tasks, or taken out by early childhood illness, will not spark. There is a greater percentage of unsparked souls in those continents or locales where life is a simple struggle, not industrialized, not in high communication with other cultures. Thus, Third World countries have a higher percentage of unsparked souls. Thus, rural areas have a higher percentage of unsparked souls than urban areas. Thus, the corridors of power almost invariably have older souls, as this is deemed a high impact zone, given to high drama for choices.

As Earth is hominoid inhabited, the obvious choice of a Star Child background to assist developing souls on Earth would be hominoid. However, the entire gamut of past life forms are found. The reason is that it is the *determination* of the entity, the skill set, the past roles they have played well, the strong desire to make a difference, that determines the choices of which volunteers to allow first incarnation opportunities. Star Children are found in all walks, but most often where existing incarnations are undecided, or they can support the Transformation. Thus, they would be unlikely to go into a primitive village, inhabited mostly by unsparked souls. Sparking is *not* caused by others, and thus their entire incarnation as a Star Child would be wasted. But if in a combat zone, of sorts, combat of orientation decisions and opportunities, their presence would make a difference. Supporting humans, terran born souls, in significant of high impact activities is regarded as a primary mission for Star Children. Thus, there are many in the corridors of power and politics around the world, and in the fields where assisting starvation or suffering are the focus.

All rights reserved: ZetaTalk@ZetaTalk.com



[Mail this Page](#) to a Friend.

ZetaTalk: Incarnations

Note: written Dec 15, 1995

Incarnations occur naturally and is the way forming entities get their start. The stuff of souls is everywhere, disbursed throughout the Universe, but so disbursed it does not make a soul. Does a single strand of DNA constitute life? Yes and no. By itself it is a complex chemical, but when combined with other DNA in a living organism it is considered life. The stuff of souls tends to gather in living things as the environment is more interesting than non-living environments. It is not so much attracted to life as that it lingers, and thus begins to accumulate. Without conscious intelligence it fails to establish a personality, a self, and after death of the life form disburses again. Incarnations on 3rd Density planets happen naturally at first, as having formed a self the forming entity migrates to a new body after the death of the old. It can happen in unguided migrations that more than one forming entity wants to inhabit the same body, but usually cohabitation is distressing to all parties, including the body, and results in only the strongest entity remaining.

After a certain point, when the lessons to be learned from the sheer fact of life have been well learned by the newly formed entities, guided incarnations become the norm. This is to help the forming entities maximize the wisdom to be gained from their incarnations. Formed entities, operating in 4th Density or higher, surround the immature entity when it has freed itself from a dead or dying body, and communicate. These conferences may be short, with a second incarnation occurring almost instantly when the path is clear and incarnation opportunities available, or may drag out if the lesson to be learned requires a special environment or incarnation opportunities are limited. In the meantime the forming entity does not wander, as it is essentially herded together with others like itself, and finds this stimulating. Since incarnations are natural, when the forming entity is guided to a new body it sets up housekeeping willingly. This is a familiar experience. Burning issues which were present when the entity left its former home, a dead or dying body, come to the fore, and the forming entity is off again on the great exploration that life provides. Being incarnated is far more stimulating and fascinating than the alternative, being disincarnate, at this stage, and Out-Of-Body experiences seldom occur unless trauma to the body is extreme. During early incarnations, the young soul is given the *best* opportunity for growth by being given a virgin field each incarnation. Should they have made a mistake in a past life, they are not burdened by guilt. Should they be angry about something visited upon them in a past life, they are not burdened by anger. They can approach situations they mis-handled in past lives *afresh*, and make them go right this time.

In 3rd Density incarnations the lessons to be learned are to develop a concept of the self, a concept of the other, and to form an attitude toward relationships with others. These lessons can proceed in bodies of all types, and do not require such facilities as opposable thumbs. 3rd Density worlds where the intelligent species is dexterous and manipulation of the environment is possible spend time exploring universal concepts, but their *understanding* of the Universe is, all told, no more advanced than that gained by non-dexterous species who spend their time pondering the world around them. At a certain point, after many thousands of incarnations, the young spirit has *had* its chances. It has revisited, or re-experienced, these situations repeatedly, and is starting to form patterns. The Birthing Guides help in this matter, providing incarnation that challenge any sticking points the young soul has. However, souls have their leanings, and inclinations, and paths they prefer to follow, just as humans become stuck in their ways. And when this has become apparent, the Birthing Guides move into using these inclinations for the better good of all, rather than just repeating patterns.

All rights reserved: ZetaTalk@ZetaTalk.com



[Mail this Page](#) to a Friend.

ZetaTalk: Being Conscious

Note: written Jun 15, 2002

A difficult concept for many humans is the concept of consciousness. They see the babe in the crib, aware seemingly only of its stomach and need for milk, and compare it to the dog at their feet, seemingly aware and alert. Is the babe conscious, and the dog not? The point at which consciousness is present is not *crisp* or *clear*. Is the human conscious because they have a certain IQ? Yet it is reported that retarded humans can have incarnating souls. Is the human conscious because they discern themselves as separate from other humans? Yet so many humans are so fuzzy about their identity that they join any group for a sense of belonging, and confuse their actions with the leaders. Is the human conscious because they have a memory, can compute, can put A and B together and come up with C? Yet the Chimp uses tools, and a wolf pack can figure where the prey may be running to next, and many animals have long memories and are crafty. At what point does consciousness click in, or click out, if it does, and is it thus possible for a dog to have a soul and a human not?

We have stated that an existing soul may *chose* to incarnate in an animal that does not have the potential of sparking a soul, for education reasons. Thus, the dog or snake or dolphin does not *spark* a soul, but can be incarnated on occasion. To spark, the biological entity must have the capacity to envision itself as separate, and where many animals *seem* to have this trait, they do not. A dog will understand that it is being yelled at by its master, or snarled at by the leader of the pack, and by groveling and crawling away is indicating they seem to understand *another* has interacted with *them*, as a separate being. But this is instinctive activity, this is *not* a discernment of separate biological entities. The dog has evolved to react in such a manner, to challenge until certain signs are present, then to submit. Instinct is not consciousness. Biologically programmed reactions are not consciousness.

Even as the babe is lying in its crib, asleep or crying for milk, seemingly unaware of its surroundings, it is *aware*. It understands that when it smiles at mother, and mother picks it up, that it has engaged in an interaction with *another*. This is not the same as a birdling in a nest, putting its beak up for food when the mother bird alights. That is instinct. On evolving worlds that do not have genetic engineering, the species that eventually emerges to have consciousness, and thus sparking souls, gets there slowly. At first, there is instinct. Then there is increasing intelligence until the concept of separateness begins to be a factor. Increased intelligence tends to be selected for survival, as the intelligent species can better their odds. Thus, the *more* intelligent in the group breed to increase intelligence, and the trend hastens yet more. Thus, where not *visible* in man, his consciousness, awareness of himself as separate, a factor absolutely necessary for sparking of souls, is there.

All rights reserved: ZetaTalk@ZetaTalk.com



[Mail this Page](#) to a Friend.

ZetaTalk: Old Souls

Note: written May 15, 1997

If the Earth is a home to forming entities, and the Council of Worlds is regulating visits between entities who have graduated from such homes to travel about the Universe, then just how ancient *are* such entities sitting on the Council? The length of time is not a relevant guide here, as progression in spiritual matters is less a matter of years but a matter of growth. There are old souls in the Service-to-Self camps that have barely progressed past the point of most immature souls on Earth! They are firmly Service-to-Self, and thus progressed to 4th Density, and there they sit. There are relatively young souls who move rapidly through the densities, as by their nature they learn rapidly and do not hesitate to apply their knowledge. And in between are the vast majority, who linger at points, revisit areas they have passed through before to solidify lessons, and become blocked due to their natures now and then, moving beyond the blocks only when they realize that this is preventing any forward progress.

In human society, you have this equivalent, but this is overshadowed by the natural handicaps that the very young must struggle with. The tiny babe, helpless to feed or move or bath itself, is clearly unimpressive to humans, regardless of the wisdom inherent in the incarnating spirit. The toddler, struggling to communicate in single word phrases, is treated as a potential only. The youngster, eager to learn but often bungling in their attempts to create even the simplest contraption, are held in esteem only by loving parents and relatives. The teenager, who may be accomplished and speak great wisdom, is overlooked as they are assumed to be rebels and speaking only to assert themselves in their desire for independence and self importance. Thus the idea that a relative youngster could have wisdom beyond their elders is incomprehensible to humans. How often, from the mouths of babes, come great insight? How often do the mutterings of mature humans in their prime show that their thinking is cluttered with dependency longings, irrational resentments, self-promotion, and an inability to be creative or resourceful? Age means nothing!

A soul is unaware of its status, but tends to recognize other strong souls during an incarnation. The human form is a great mask, in the main, except to the educated. Old souls almost instantly recognize each other. This is not a body language issue, as the human can be unaware of the age of their soul, other than that they find they are focusing on issues differently than others around them. An old soul often finds they are *strongly* at issue to Service-to-Self agendas, or take action suddenly to situations where others about them are debating and unsure. An old soul often has a skill set that surprises the parents, expressing early in the life of the young human whose knowledge and skill are coming from a source other than the education being given by the parents. Thus, there are clues, but the old soul in a young body feels, most often, strange and apart until meeting others of his kind.

All rights reserved: ZetaTalk@ZetaTalk.com



[Mail this Page](#) to a Friend.

ZetaTalk: Why Incarnations

Note: written Jan 15, 2002

At what point do incarnations cease to be a learning tool? Humans entranced with Out-of-Body experiences imagine this to be a *goal*, as they see so many advantages. They could spy on their neighbors, gain information useful in power plays, and just travel without expense or distress. However, Service-to-Other entities intent on their lessons do *not* consider such skipping out of school an advantage.

- Incarnations trap the developing soul in a body with limitations, lesson 1.
- Incarnations create the need to be creative, and resourceful, lesson 2.
- Incarnations put the developing soul in pain and distress, frustration, longing, so that the soul has empathy later for others in this situation, lesson 3.

Thus, incarnation are seen as a tool, and until the soul has grown *beyond* this point, and has learned all the lesson that *could* be learned from incarnation, there is no press to avoid them. Humans experience Out-of-Body during suffering, as many Near Death Experiencers will tell you that they viewed their moment of death from *outside* their body. Torture, or intense pain, will likewise cause the soul to jump out of the body, and the body and soul then remember this and attempt to repeat it. This is discouraged by the Spirit Guides, who consider this skipping out of school, and the soul is forced back into the body by various means. As you mature, and move forward into higher densities, this desire to skip out of school will cease.

Many life forms in 3rd Density are incapable of manipulating their environment. They can have empathy with each other, the key ingredient for development *past* 3rd Density, as the Service-to-Other vs. Service-to-Self decision can be made. But for water creatures, for instance, who have no appendages and cannot manipulate their environment, technology is not possible. We have mentioned that Crop Circles are done by water creatures who could not travel to this planet unless assisted. They function in 4th and even 5th Density, in this life form, but do not construct or operate space ships. This is done for them. They are able, through physical means, primarily what you would consider *mental* powers, to create the crop circles. Thus, technology, which is whiz-bang to humans, is merely viewed as a toy, and the lack of technology not a reason to avoid incarnations.

All rights reserved: ZetaTalk@ZetaTalk.com



[Mail this Page](#) to a Friend.

ZetaTalk: When We Die

Note: written Apr 15, 1996

Humans are aware of a reception line awaiting them when they die, from the reports of Near Death Experiences - a long tunnel with a bright white light at the end, and those now deceased who were close to them waiting or beckoning. If the moment of death is confusing to doctors, it is no less clear in the spiritual realm. An injured body, such as one sustaining massive brain injury, may cease to be a home for the incarnating entity months before those attending the death watch finally pull the sheets up over the lingering beloved. It is possible, in such a circumstance, that the entity has already been placed in another, thriving, human body - a newborn babe. On the other hand, some entities hang around long after the body has been cremated or burned, as haunting ghosts. Beyond the issue of when the spirit leaves the body is the spiritual issue of how the entity puts the past life to rest, judges progress made on various lessons that were at the fore going into the incarnation, and determines any future course of action they personally might desire as a result - critique time.

If the death was sudden and unexpected, the entity may have *many* outstanding issues they remain concerned with after the physical body dies. This invariably is the first stop after death, though it varies depending on the general orientation of the entity and their life circumstances. Someone elderly, who had long settled their affairs in preparation for the inevitable, might not do more than cast a backward glance on their way to the future, noting that their death was being handled as they had anticipated. Someone in their prime, with dependent children or oldsters and many outstanding promises, might linger at this stage, visiting those they are concerned about as a ghost, essentially an Out-Of-Body, for days or months until they can see the outcome. This stage differs between orientations, the Service-to-Others lingering longer due to their concern for others and the Service-to-Self wishing only to move on to future opportunities.

At times, those who have been wronged and wish for vindication or revenge may also linger at this stage, haunting in an effort to influence humans affairs. If the spirit is lingering, it is often allowed to do so, else it avoids the current incarnation and is distracted. As we have stated, the spirit, once sparked, does not die, and pain must be dealt with as a resolution on future lives. Spirits are *aware* of their past lives, though the human incarnated is clueless, often. Thus, for the spirit, there is no change in this matter after death. The spirit between incarnations is like an Out-Of-Body experience, in that it can communicate more readily, and thus the Guides have no problem getting them to gather. They are talking up a storm, especially if coming from a recent disaster or shared experience. Once reincarnated, the young spirits are intent on learning experiences, pressing agendas forward, and the like. Incarnations are *more* than discussion groups, they are action oriented!

All rights reserved: ZetaTalk@ZetaTalk.com



[Mail this Page](#) to a Friend.



ZetaTalk: Between Lives

Note: written Jan 15, 1996

Forming entities on a 3rd Density world incarnate almost continuously early in their 3rd Density existence, unless there is a lack of opportunity. Just after an intelligent species has been genetically engineered, however, forming entities usually find the opposite situation - more than enough bodies awaiting an incarnation, a choice. This is due to many forming entities aborting upon death, so that a stable or growing population has an increasing number of bodies but few reincarnating entities. During these early years the majority of intelligent, conscious, creatures are in fact virgin territory for a new forming entity, with the minority being occupied by a reincarnating spirit. The birthing envoys, at this stage, allow the process to occur automatically. In due time they step in to start guiding incarnations, but do this without having to resort to the imposition of any physical restraints.

We have mentioned that spirit guides force an Out-Of-Body entity back into its body, and that birthing envoys gather up entities leaving a dead or dying body. How is this done without physical restraints? If spirits can pass through walls and travel freely, would they not simply flit away from the entities watching over them? Order is maintained in these situations by what we would best describe as a force of will. Entities acting as school yard monitors on a 3rd Density world are operating in 4th Density, and many have arrived from even higher densities to do service. Spiritually, they have more bulk, more mass, and certainly have more wisdom and skill to coax and manipulate lesser entities.

An immature entity leaning toward Service-to-Self is led to an environment, among more mature entities, where it can be the center of attention, and thus it has no urge to wander. Immature entities leaning toward Service-to-Other are placed together with a peer that needs healing, and participate with higher density entities in this process. They likewise, given their sense of purpose, have no immediate urge to wander. Where recently incarnated entities have unsettled business and wish to visit the living or to visit certain settings, a field trip is essentially arranged. Some of these field trips go on for years and even hundreds of years, producing what you term hauntings. During this time the distraught entity is in the company of its guides, who normally keep watch over a number of other immature entities at the same time. Nevertheless, the guides can be called upon to attend to the haunting entity, when need be.

Over time a 3rd Density world evolves to the point where most of its intelligent creatures are occupied by reincarnating entities, and unless there is a drastic reduction in the population, waiting periods only occur when the birthing envoys determine that the next incarnation requires special circumstances. During times of a rapid increase in population, such as the Earth has experienced during the past half century, *no reincarnation* occurs in many intelligent creatures, but a forming entity may begin. As is usual in these circumstances, most will abort. Thus, when the harvest time comes, during the pending pole shift, there will *not* be close to five billion souls to be escorted to new homes, but only a little more than a billion. Where a life is lived passively, with little challenge and exhibiting no initiative, a forming entity is unlikely to do anything but dissipate upon death. There is nothing for the birthing envoys to gather.

All rights reserved: ZetaTalk@ZetaTalk.com



[Mail this Page](#) to a Friend.

ZetaTalk: Next Incarnation

Note: written Feb 15, 2002

Critique of the incarnation, judging the success or failure of the incarnation, is not always what the entity might desire. The entity might feel they, themselves, have made progress where the spirit guides have another opinion entirely. Progress on lessons to be learned can be confused by cross currents, where the life circumstances offered opportunities such that *unplanned* lessons were addressed, and those planned got neglected. The immature entity may view the incarnation a failure, in this regard, and be surprised to find the record being looked at from unexpected angles. Most often the entity has made scarce progress, and will find themselves repeating the setting in future lives until progress is made. The stage where future action is determined marks the point where the past life is settled and the future is beginning. This point is not reached as long as issues from the first two stages are outstanding. It is at this stage that the lessons at the fore of the next incarnation are clear. The immature entity may not be in agreement, and thus this stage can be drawn out, as the incarnation would be wasted if the focus were not clear.

Where humans are *unaware* of their past lives, and per the Rule of Forgetfulness are supposed to start the incarnation with a clean slate, in fact the immature entity needs to be clear on how their progress is viewed by others. They may not agree, but they must understand. At this point the next incarnation is planned and plotted by the spirit guides, who give scant consideration to what the immature entity might be clamoring for. The spirit is often mulling the past life over prior to the moment of death, and planning the next incarnation. Thus, there is a normal progression to discussion with the Spirit Guides, who are in teamship with the Birthing Guides, and the next incarnation is often arranged quickly. As we have mentioned this is not the choice of the young spirit, but of the guides. Thus, it's a bit like getting of a train at the station, and walking over to our next train! Just like that, on your way again!

All rights reserved: ZetaTalk@ZetaTalk.com



[Mail this Page](#) to a Friend.



ZetaTalk: Crowded Incarnations

Note: written Apr 15, 1997

On worlds where incarnations are beginning to repeat, where entities have sparked due to incarnating into intelligent species and are *re*-incarnating again and again, crowded incarnations seldom happen as there is a plenitude of bodies for the entities to incarnate into. However, in a situation such as the Earth is due to experience, where the majority of bodies will die suddenly leaving the formerly incarnated entities *without* opportunities, chaos can and does ensue. Crowded incarnations are very temporary. For instance during the forthcoming pole shift this potential may exist for several months. The normal procedure where immature entities are gathered upon death of their body and amused or otherwise occupied until the next incarnation can be arranged is difficult due to the numbers, so at times these entities roam about and try to arrange their own incarnations. One of four possible outcomes ensue:

- The incarnation can become crowded, where more than *one* entity is incarnating. When this occurs, the human body often becomes quite crowded, with *several* entities in and out in varying degrees, as the entity originally incarnating is weak and does not fight for its territory. It can occur that multiple entities are incarnating in a body at once, and in these situations *all* are weak or they would not tolerate cohabitation either.
- A fight for the body ensues, where the stronger entity pushes out all others. Normally the birthing guides prevent such takeovers but during chaotic conditions, this can pass notice temporarily. If the originally incarnating entity does not *want* to be removed and lingers about in resentment, the birthing guides soon arrive to set things right again. However, if the entity displaced in fact was looking for a way out and is relieved, this may be treated as a voluntary walk-in and allowed to continue.
- The takeover entities are rebuffed from the beginning and no crowded incarnation ensues. This is *most often* the case, as the originally incarnating entity most definitely has the advantage, being familiar with the territory for instance. The incarnating entity and its human body sense what they might term ghosts or spirits about, and even be aware of spiritual discussions or invitations, but are otherwise not disturbed by the drama which in truth does not begin.
- *All* leave in disgust over the haranguing, leaving the human body without an incarnating entity and vulnerable to yet another entity that might come along and be interested. This might occur when the human's situation is unappealing and the originally incarnating entity has been Out-Of-Body and understands how to arrange this for itself. Where the original entity has not yet learned this capacity, this outcome would not occur.

All rights reserved: ZetaTalk@ZetaTalk.com



[Mail this Page](#) to a Friend.

ZetaTalk: Incarnation Focus

written Oct 14, 2006

Since there are so many dysfunctional families in the world where parents and children do not bond well, it seems rather we are all being reincarnated together at the Birthing Envoys' choice and not by our own choice. After all, who the hell would choose to be born to an emotionally bankrupt, remote, abusive parent? No one. The Birthing Envoys must be arranging these family incarnations in order to teach simultaneous lessons to each of us and / or to test us. This existence is a test anyway, right?

We have stated that for immature souls the Spirit Guides dictate the circumstances of an incarnation, and the immature soul has scant input. We have stated that Out-of-Body experiences are discouraged, considered flitting out of school, with the young souls returned to their incarnation. We have stated that this type of monitoring or coercion by the Spirit Guides is done essentially by a force of will, but can the young soul rebel and refuse? What happens in these circumstances? We have stated that the Council of World relies on physical constraints to control souls in the Service-to-Self, using a substance that only very high level entities can control. This substance blocks the stuff of souls from moving about, if necessary, a type of jail. Immature souls leaning toward the Service-to-Self invariably challenge their Spirit Guides, as adolescents do their parents, testing their limits. They encounter this type of restraint, being either forced to remain in the incarnation, or assume the incarnation to begin with, and realize that protest is futile.

The lessons to be learned during a forthcoming incarnation are clear to the Spirit Guides, and have been explained fully to the immature soul. Often, the lesson is one at the fore repeatedly, in the past, the young entity stuck and not making much progress in this regard. We use the word lesson because the Earth, as in any 3rd Density experience, is a schoolhouse for young souls, and work in school is referred to as lessons. But this is not akin to memorizing and prating back what one is expected to have memorized. Nor is it akin to solving puzzles, learning the mechanisms for solving puzzles, the sciences or the machinations of mathematics so that the soul understands the combustion engine, for instance, and can apply these concepts to future situations. Gaining in-depth *knowledge* of how the Universe works is, of course, a product of being incarnated, but the lessons of 3rd Density are primarily growth of the soul in how it positions itself vs a vs other souls. The young soul does this by migrating toward being Service-to-Other or Service-to-Self, by a series of decisions backed by actions taken.

That said, that the Spirit Guides can force an incarnation to occur. In that interaction with other entities is the primary determination to be made in 3rd Density, how are the circumstances of an incarnation determined? Rich or poor, strong and healthy or sickly and crippled, intelligent or retarded, with opportunities and freedom or in a restricted setting, and with a supportive family or in a setting of rejection and cruelty - how and why is the particular setting chosen for the young soul? An obvious reason is to teach the young soul empathy, or test the willingness to sacrifice the self out of empathy. Empathy is best learned by being in a position to experience distress, so that in a future life one recognizes the situation another is in, and can either act or decide not to act. Since the goal is to allow the young soul to make decisions, and thus take action, this setting is best done cyclically, with a life experiencing some kind of pain or restriction alternating with a life where opportunity to help those in such a setting exists.

Depending upon the leaning of the soul, the lessons would move to present greater opportunities for sacrifice of the self, if leaning toward Service-to-Other, to conflicts with other opportunists if leaning toward the Service-to-Self. Service-to-Self is more than mere self centered enjoyment, it is the realization that life with others who are of a like mind will require a type of cooperation, establishment of a pecking order, and living with the consequences of having squandered resources in the unmitigated focus on enjoyment. Service-to-Other is likewise leaning to trust those of a like mind, to accept help as well as give it, and learning the consequences of unmitigated giving without consideration of the need to sustain the self. Thus both orientations are learning what their life in 4th Density, where the spiritual orientations are separated, will be like. Souls will be sorted out by spiritual orientation with those in the Service-to-

Self carted off to their prison colony worlds and those in the Service-to-Other incarnated into high tech communities where all care for the common good and the Golden Rule prevails, and in the main these souls have been acclimated to anticipate the setting they are heading toward.

We have stated that going into the Transformation, family or community settings for an incarnation are chosen for exposure to the polarization to be expected during the last days. This polarization of the spiritual orientations presents a lesson in the type of interaction to be expected in 4th Density, where those in the Service-to-Other only encounter those in the Service-to-Self in strictly controlled settings and with delimiting parameters. Democrat and Republican today encounter each other, with the obvious leanings of the parties toward concern for the common man, or concern for the elite with cruel repression of the common man, exposed. But the tentacles where these philosophies clash are many, the opportunities for encounters many. In 4th Density, the battles are more intense, but the settings are tightly controlled and delimited. To prepare young souls for encounters they will have in highly polarized settings, and for future encounters in 4th Density, family settings may put highly Service-to-Other and strongly Service-to-Self souls within the same family. There is never any doubt, within the family, as to the focus of these highly polarized members. Depending upon how activist the individual soul is, these types of encounters may occur in the community, or national, setting, likewise with forethought by the Spirit Guides as to how the incarnations might assist in arranging these encounters.

The next incarnation is planned and plotted by the spirit guides, who give scant consideration to what the immature entity might be clamoring for. This is not the choice of the young spirit, but of the guides.

ZetaTalk: [Next Incarnation](#), written Feb 15, 2002

The Birthing Envoys step in to start guiding incarnations, but do this without having to resort to the imposition of any physical restraints. Order is maintained by what we would best describe as a force of will.

ZetaTalk: [Between Lives](#), written Jan 15, 1996

Once reincarnated, the young spirits are intent on learning experiences, pressing agendas forward, and the like. Incarnations are more than discussion groups, they are action oriented!

ZetaTalk: [When We Die](#), written Apr 15, 1996

These temporary Out-of-Body exits are self limiting, as the guides force the entity back into its physical body after a time. No skipping out of school.

ZetaTalk: [Out-Of- Body](#), written by Jul 15, 1995

Essentially, this is a block that prevents any physical or mental action not authorized. The Council of Worlds relies on a very high level density substance in this regard, which cannot be altered or interfered with by lower densities.

ZetaTalk: [Keep In Line](#), written Jul 15, 1995



[Mail this Page](#) to a Friend.

ZetaTalk: Soul Senses

Note: written Jul 15, 1997

Humans are used to thinking of the senses as merely sight, sound, touch, taste, and smell - five senses. A sixth sense is attributed to all other hunches, and is variously described as being supported by ESP or intuition. The human body alone has many other senses, and the soul surpasses any given body it happens to incarnate in its reach. The Spirit/Body or Spirit/Mind connection is a mystery to *us*, also. We understand that the soul can bridge all densities, so that we in 4th Density can speak to a soul in a 3rd Density contactee, effortlessly. We understand that the soul enjoys incarnations, infuses the physical body entirely, and seems to have a heart and mind function as does the physical body. But the composition of the soul, the stuff of souls, is not something we experiment with, or dissect. Thus, we can't tell you how this occurs.

The sense of sight, which humans presume is centered only in the eyes, in fact can occur on the surface of the skin, as experiences of the blind attest. Light rays striking *any* living surface can be sensed and sorted out. The sense of sound likewise can be experienced outside of the ear, as vibrations. Taste and touch share similarities, as they are immediate reactions to chemicals affecting the living surface. Touch breaks down into many aspects, including pressure sensing. Senses not mentioned are the sense of balance, where relationship to the gravity center is sensed, the sense of motion, related to the sense of balance, and the sense of being ill, where the humans senses that all is not right with the body. We have mentioned only those senses that the common man can readily relate to, *not* the myriad that in fact exist. Between the soul and its surroundings, there are many touch points. Thus even though the soul does not actually have eyes, it can see!

All rights reserved: ZetaTalk@ZetaTalk.com



[Mail this Page](#) to a Friend.

ZetaTalk: Mind/Spirit Connection

Note: written Sep 15, 1995

As spirits seem dissociated from the body, being able to leave during an Out-Of-Body, and can ignore physical barriers, how then does the spirit communicate to the biochemical arrangement that is the mind? What is the point of connection? The spirit does not need to switch densities, so the mind/spirit connection is not vibrational, being on the same wave length as you say. As the spirit can function without a body the connection is not biochemical. As spirits develop during incarnations in life forms on diverse worlds wholly incompatible with each other the connection does not appear to have a physical requirement.

This puzzle is most easily understood if one considers how sub-atomic particles operate. However diverse the various elements of the physical world seem, they break down into the same component parts. The base building blocks are the same. Spirits are composed of a substance that *is* physical in the larger scheme, and surpasses in its reach any one density vibration. Just as on the sub-atomic level you consider some elements to communicate electrically, encouraging or inciting an electron flow, and other elements to be inert, just so your spirit considers your mind to be capable of an interchange where the stone walls it passes through are inert. The spirit communicates to the mind by biochemical means, by inciting biochemical activity. It does so by adjusting itself to the density of the incarnated body and to the peculiar biochemistry of the life form. This feat is no more spectacular than tuning an x-ray machine to penetrate the thickness of an object. During each incarnation the spirit quickly familiarizes itself with its new physical body, and gets down to business.

Does the spirit have memory, as the mind does? Most certainly, and remembers the lessons learned during each incarnation flawlessly. Humans are used to their conscious memory being capable of distortion, of remembering incidences as they wish, not as they were. The spirit, however, is like the subconscious and does not distort memories. How is it then that the babe, incarnated by an old and wise spirit, does not remember its past lives? The spirit can only speak to the mind as the mind is ready to receive. If the biochemical pathways for the concept the spirit wishes to relay are not yet in place in the mind, the spirit can only speak to the emotions. Thus humans *feel* they have lived before, but do not have an explanation for the concept. Thus humans may *sense* that an incident is similar to another experienced before in a past life, but unless they are willing to entertain the concept of past lives, they will not be open to having these spiritual memories unfold.

All rights reserved: ZetaTalk@ZetaTalk.com



[Mail this Page](#) to a Friend.

ZetaTalk: Spirit/Body Connection

Note: written Nov 15, 1995

One does not need to listen to the endless discussions on nature vs. nurture to understand that *both* influences shape the person. However, a third influence is in effect, and this stronger than either of the others - the spirit. Genetics of course limits the person physically, determining whether they can enter the Olympics or solve complex math puzzlers, and also determines to a large degree how the body will react to stress or the aging process. The environment, being what shapes the child's perception of the world around him, determines at least early in life what role models the child will choose and how guarded or enthusiastic the child will be. But the spirit is louder than both these other voices, and by its orientation and strength determines how the person's very life will be led, the occupation chosen, the motives driving the person, and where the person draws the line on whether to get involved or not. Because the spirit speaks to the body as well as the mind, its influence is also over the biochemistry of the human body incarnated, and this has more of an effect than is generally recognized. If the child is determined to be an outstanding athlete, for instance, having judged that escape from a ghetto is not possible without such an assist, physical development *beyond* that supported by genetics can result. How is this possible?

The spirit occupies its own density, a density that can interact with matter on all other densities. Just as the spirit adjusts itself to the incarnation density, and positions itself to communicate with the human brain for the Mind/Spirit Connection, likewise it positions itself to influence the human body. Genetics are but chemistry, and influence growth and development through chemistry. Where this cannot be utterly or even significantly changed by the influence of the spirit, where biochemistry can affect the outcome and the spirit can affect the biochemistry, its influence can leave a mark. In the example of the child desiring to become an athlete, the basic bone and muscle structure, height, stamina, and reflexes are determined by genetics. But physical feats are often determined as much by concentration and sheer energy, factors controlled by biochemistry - hormones, such as adrenaline, brain chemicals supporting continuous focus, and free nutrients in the blood stream available to feed the process. In this way the spirit transcends the density differences, and takes charge of the incarnation as much as physically possible.

Doctors have often noticed that a patient will live or die depending on their will to live. Where this can be attributed to a Mind/Body Connection, the influence of the spirit in these matters lies at the base. The soul infuses the body during an incarnation, and communicates on many levels and can bridge densities in this matter. The stuff of souls is *not* something we, the Zetas, have experimented with, nor are we allowed to! Thus, beyond describing the properties and capacities of the stuff of souls, we cannot explain *how* it manages this. But it influences the body, to overcome disease and struggle forward. It influences the brain, to utilize this or that portion of the brain or to develop channels and connections in the brain matter. The will to live has been well documented, overcoming disease that physicians were *sure* would end the life. Much of this is the soul, determined not to end the incarnation. Likewise, the soul can influence a dying body to go before its time, if the incarnation is desired to end. Thus, we suggest those curious about how the soul influences the body simply *observe* the many clues about them, as this is as much a tool for learning as anything we can explain.

All rights reserved: ZetaTalk@ZetaTalk.com



[Mail this Page](#) to a Friend.

ZetaTalk: Percentages

Note: written Dec 15, 1995

If one were to take a census on intelligent life in the part of the Universe the Earth goes around in, the results would probably shock humans. As entities in higher densities, 5th and above, have mobility and often go where duty calls, they may be wholly absent or present in great numbers, depending. Due to the Transformation, the Earth is positively swarming with such attention at the present time. Therefore, to give a realistic picture, we will describe 2nd, 3rd, and 4th Density percentages only.

On a world by world basis there are about 1,000 dead worlds for every one that holds life. Humans are familiar enough with their surroundings to understand conditions on other planets, and if anything, would be surprised at the percentage capable of life. Not every life bearing planet sustains life that can develop to the level required for conscious and intelligent thought. There are about 2,500 primordial worlds for every one that can support an intelligent species. Your Earth, for instance, had many such species with this potential. Of these worlds that hold 3rd Density intelligent species, the vast majority, perhaps 75%, are water babies, as the vast majority of habitable planets are essentially water planets. These species may be crablike, fishlike, squidlike, or formed like almost any of your ocean inhabitants - an almost infinite variety.

Of the worlds that sustain land dwelling intelligent species, the greater share, just under 60%, are reptilian. Reptilian life forms appear first, and thus better their percentages. A minority are mammalian, above 10%, but whenever these life forms are a candidate they beat out all other candidates as mammalian existence is highly interactive and thus a good spiritual schoolyard for forming entities. The remaining land dwelling 3rd Density species range between birdlike or insect types, the latter more prevalent at about 30%. Since 3rd Density is a short stop, required only for the orientation lesson, 4th Density entities are much more prevalent. There are approximately 1,200 4th Density entities for every forming 3rd Density entity.

All rights reserved: ZetaTalk@ZetaTalk.com



[Mail this Page](#) to a Friend.

ZetaTalk: Other Worlds

Note: written by Jul 15, 1995

Regarding physics, and whether there are differences throughout the Universe. Where there are differences in how matter acts between the densities, there is no difference within a density. Life on other worlds is, of course, adapted to the chemical and mineral mix indigenous on the planet. Some are silicon based, where Homo Sapiens, for instance, is carbon based. The primary difference is in adaptation to radiation, the intensity of a given sun or other heat source. Your sun is of moderate intensity, but there are some worlds which you could not visit in your physical form. You would fry or quickly sicken. There are other worlds which you could not visit in physical form because of the chemical and mineral mix. You would become poisoned. These are some of the reasons why all intelligent life forms have not been presented to our contactees, during any adaptation orientation such as the one our emissary, Nancy, underwent. Consequently, the Zetas have not seen all that much of the Universe either. Since the issues and the spiritual work to be done are the same, it does not matter.

All rights reserved: ZetaTalk@ZetaTalk.com



[Mail this Page](#) to a Friend.



ZetaTalk: Habitable Worlds

Note: written Feb 15, 1997

Due to the fact that entities from higher densities often conduct a visitation in light form, as they no longer require a corporal body for their spiritual growth, there is often confusion as to where these entities live. Might they not live on a beautiful planet such as Saturn? Entities in light form do not require a home planet, and tend to congregate where less mature entities are living and developing, on or near habitable worlds, as this is where their interests lie. Life only evolves where something akin to DNA can develop and be nurtured. Where the physical processes are essentially explosive, as within suns, or immobilized, as on your frozen outer planets, any DNA type structure would either be torn apart or fail to grow. What kind of thought process could a single atom maintain?

Habitable worlds are:

1. Those that are not undergoing an essentially explosive process, such as suns undergo, or are not in such close proximity to such a process that they share the same environment. Some heat and even light generating processes can occur within habitable worlds, and are even beneficial to life, but the line is drawn where the explosive process tears DNA type structures apart rather than nurtures them.
2. Those that are not so far from a heat and light generating process that their atoms are essentially immobilized. There is more variety in these types of worlds than mankind currently surmises. As long as a DNA type structure can form and not be destroyed, life can exist. However, since the lessons to be learned during the early densities are learned best during incarnations, such slow-motion worlds are poor school houses and seldom develop any forming entities who fail to spark in such a boring environment.
3. Those that contain a heavy preponderance of a liquid, such as water, to encourage mobility. Mankind assumes that life requires water, and they are not far from the truth. There are other substitutes, just as there are other substitutes for carbon in the chemical chains that form into DNA type structures, but the stage must be set, for any type of complex life forms to develop, for mobility.

Thus,

- worlds such as your outer planets are too cold;
- worlds such as your planet Venus are too hot;
- worlds such as your planet Mars *do* contain enough water to support the development of life, which did develop but has now been frozen out;
- moons such as Europa could support life in slow motion that would scarcely develop;
- gaseous planets such as Saturn or Jupiter could support life if the chemical mix is such that DNA type structures can develop, the heavy atmosphere acting like a type of ocean

However, within your Solar System, only the Earth currently supports complex life, with ample water and heat from a molten core and the right amount of sunlight from a moderate sized sun. Both Mars and Venus and a number of planets formerly in the Asteroid Belt supported life in the past. The Asteroid Belt had water planets capable of developing complex life forms, but were dashed to pieces by the trash and Moons that accompanies the periodic passages of the 12th Planet. Your gaseous planets have a chemical mix that aborts, rather than supports the building of

DNA type structures. And the 12th Planet, also a member of your Solar System, has a slow and very controlled explosive process that supplies it with its own heat and light, which emerges through deep rifts in the oceans and scatters in the atmosphere to form a diffuse light around this traveling planet.

All rights reserved: ZetaTalk@ZetaTalk.com



[Mail this Page](#) to a Friend.



ZetaTalk: Intelligent Insects

Note: written Dec 15, 1996

Life evolves in a similar manner regardless of the predominant atomic elements on any given world. Carbon based or silicon based, the process of DNA evolution is strikingly similar. Add to that the factor of seeding potential life bearing planets and the similarities between life that develops on one world and life that develops on another may be almost identical. However, the environment on a given planet may be harsh to one type of life form and ideal for another.

- The impact of the environment is most commonly seen in the prevalence of water planets, where no dry land exists, failing to evolve land dwelling creatures at all. Here the life form that emerges as the intelligent species is most often a type of octopus, as their tentacles allow manipulation of the environment and intelligence eventually develops due to that capacity.
- The second most common impact of the environment occurs where mammals fail to prosper because reptiles prospered so well. This occurs on warm planets where a rapid rotation of the planet toasts the environment evenly and allows cold-blooded reptiles to be constantly active. The reptiles simply eat the emerging mammals, being more highly evolved and there first, and thus the mammal life form is less likely to evolve.
- Planets where a mammal life form emerges and evolves to a degree that allows the mammal to be a candidate for selection as the intelligent species to be genetically engineered on the planet routinely have an environment that is harsh in some way to reptiles. Your Earth is such a planet, with a slow rotation that creates cold nights, winters, and poles such that cold-blooded reptiles are sluggish and slow.
- Where insects develop as the dominant intelligent species the planet has land but does *not* have a generous food supply in its waters or as vegetation on the land. Insects eat anything, in tiny bites, and can live on dung, rotting tissue, crumbs, and the slime that may cover rocks along the edge of water pools. As with the dominance of reptiles, the life form that gets a head start and does not experience frequent set-backs can take advantage of what follows.

In the case of planets where insects emerge as predominant, some insect forms begin to eat *other* insects, and thus can grow larger. Humans, used to insect forms that are tiny, are seeing what occurs when *all* insect forms are consumed by others. On Earth, insects are consumed not only by other insects but also are the favorite food of birds, reptiles, and rodents. For any insect to evolve as a *large* specimen on Earth would require a protected environment where none of the other Earth creatures could discover it. This is simply not the case on your Earth, but is the case on those rare worlds where insects evolve as the predominant, and eventually the intelligent, species.

All rights reserved: ZetaTalk@ZetaTalk.com



[Mail this Page](#) to a Friend.

ZetaTalk: Who Came First

Note: written Jun 15, 1996

Should a stranger drop into human culture from another world it would be hard to decipher all the protocols and interdependencies without a historical record. Why paper money rather than cloth woven with special threads, and why are some structures square rather than round when most building materials such as rocks, tree stumps, and caves are rounded? Such is the confusion that humans experience when first learning about genetic engineering in their past and seeding planets in general. The genetic engineering practices they learn about do *not* reflect, on their face, the history of these practices. Was life, at the very beginning, seeded by God, and when did the practice of intelligent groups seeding other planets begin? We, the Service-to-Other Zetas who are talking to you here, do not have all the answers, but we can share our understanding.

Life first begins as a natural result of the processes that occur on all life bearing planets - the warm soup of oceans, filled with the simple genetic components that can and do linkup in an endless variety of combinations. Humans are aware that the DNA on Earth is all composed of four simple building blocks. In other parts of the Universe such components differ from those on Earth, nor is four the magic number. Big bangs occur periodically in this or that section of the Universe, and life forming after a big bang evolves slowly. In that same section of the Universe numerous worlds will eventually produce, during the natural course of evolution, intelligent creatures capable of offering a home to forming entities. Seeding planets and genetic engineering is eventually done within a section of the Universe for the same reasons that human couples long to have children - for more company and the pride that parentage brings. The process of evolution is expedited, bumped from slow motion to fast, and the number of worlds eventually becoming life-bearing planets is increased.

In the section of the Universe to which the Earth is a part, the seeding of planets and migration of reptilian or hominoid life forms has been in place long before our time. We have been told that *none* of the hominoids currently visiting Earth were the precursor, but rather all are the result of seeding and genetic engineering. Of the many hominoids who contributed to mankind's hominoid structure, *none* were the base hominoid, which was smaller and more monkey-like than would be expected. In truth, the issue of who started mankind will not be resolved by researching the history of genetic engineering efforts, as every step back opens another history book, and on it goes. Does it matter? Live in the present, which has more puzzles than humans can even begin to address. Live for the future, which will shortly get quite lively.

All rights reserved: ZetaTalk@ZetaTalk.com



[Mail this Page](#) to a Friend.

ZetaTalk: Genetic Engineering

Note: written Jan 15, 2002

Life evolves toward 3rd and 4th Density naturally, in the Universe, only more slowly than if assisted. There is no more difference in seeded worlds than unseeded worlds, than there is in babies conceived in test tubes vs. naturally and by accident. This only speeds the process, and results in more souls, sooner. The reason for interest in seeding worlds, and in essence parenting new souls, is no different than a human parent wanting to nurture. One is allowed great scope for empathy, in being not only a Birthing Guide but a Spirit Guide, as both functions help the young soul toward paths one would hope for them. The Birthing Guides help to steer toward an incarnation that will assist learning. The Spirit Guides are on hand during the incarnation to assist with questions, times of doubt and need for counseling.

Most entities in higher densities do *not* assist thus with 3rd Density worlds, but some have specialized in this. Thus, it is a matter of choice, in the Service-to-Other entity, where it can be of service, and some chose this direction. Human parents want children for many reasons. They want company, status, someone to interact with them and look up to them. They want helping hands on the farm, someone to carry on the family name or business, or because they are expected to produce offspring else be considered lacking in some regard. Humans thus presume a number of motives in aliens that are genetically engineering a 3rd Density life form. They presume all the motives *they* are familiar with. However, genetic engineering is done by Service-to-Other groups, under tight control and direction by the Council of Worlds. Thus, they are Service-to-Other motives, exclusively.

All rights reserved: ZetaTalk@ZetaTalk.com



[Mail this Page](#) to a Friend.

ZetaTalk: Missing Link

Note: written Feb 15, 2002

What mankind calls the Missing Link will not be located as genetic engineering often took place in tiny labs, islands where those being engineered would not escape and breed with species or individuals not selected for breeding. If one wants to develop a line of thoroughbred horses, one does not have the mares running loose. One keeps them in fields, introduces the stallion of choice, and subsequently selects offspring of choice for the next round. Bluntly speaking, when one is trying to increase the IQ of an ape, and does not wish to spend eternity on a world doing so, one takes such steps. Thus, leaps, or missing links, are often on islands that may have been washed over by great waves during subsequent cataclysms, or even gone under the waves and be ocean bottom now. Just where those islands might be, is irrelevant to man now, as he has more challenges than he will be able to handle at this time with the forthcoming pole shift.

All rights reserved: ZetaTalk@ZetaTalk.com



[Mail this Page](#) to a Friend.

ZetaTalk: Earth's First

Note: written Feb 15, 2002

On Earth, the species that evolved *first* to be close to this level were reptilian. They were engineered, gained intelligence to the level of mankind today, but did not have the dexterity that hominoids do. It is often speculated that these intelligent reptiles were small dinosaurs. In fact, they were amphibious, as the Earth had earlier been a water planet, before its crash where its wound in the Pacific occurred. Thus, they did not have the arms and fingers and toes that many lizards have. They did not have the means to create technology, as they could not manipulate their environment. They had fins, long bodies, and very little else. The remnants today, live in places on Earth, within cavities that have water ways, and we decline to describe this further. Their selection as 3rd Density species was based on their native intelligence, and the socialization they had already developed, just as the ape was deemed a good predecessor for these same reasons. The societies they had developed were deemed appropriate for 3rd Density life.

There are many 3rd Density worlds where the social arena is the *dominant* spiritual development arena. Who can influence who, who is friends with whom, who can punish whom, etc. This is not all that different from man's experiences, except that mankind distracts himself with technology. He plays with *things*, if frustrated with social interaction. Where *things* cannot be a distraction, these reptiles simply went off for a swim, just as man goes off for a walk. Man is used to thinking of talking and writing, as well as body language. But most species with social interaction have many means of communication. Even birds and insects communicate with each other. It is not so much the complexity of the message as the *meaning* behind it, not often misunderstood. A dog can exhibit affection by licking or disgorging food to its young, and exhibit hostility and rejection by a snarl. Whether this is clothed in lots of words or not, the *message* is clear. Choices for Service-to-Other or Service-to-Self thus are many, regardless of the ability to record complex communications.

This reptilian race was susceptible to the same factors that created a great dieoff among the dinosaurs, and floundered in poor health. It became apparent that the continuance of this species was not sustainable, as the susceptibility was *inherent* in their DNA and would be hard to counter. Thus, their engineers turned to considering other species, which eventually became man. Mammals had resistance that the reptiles did not. Therefore, mankind is not the *first* intelligent species to evolve or be assisted in evolution on Earth. As we have stated, worlds are often used repeatedly for 3rd Density existence. Indeed, just as humans today have souls that were at one time incarnated in the giant hominoids formerly visiting Earth, and just as Star Children are incarnated on Earth, so souls that had to move on to new bodies during this time, the reptilian dieoff, moved into Early Man. There is a strong desire of young souls to remain in place, familiar places, but primary because they have unfinished agendas. Just as young souls may linger between incarnations and haunt, as ghosts, in a similar manner, they will want to reincarnation in the area. This tendency lasts often through much of 4th Density, a long plateau, so does not die quickly.

All rights reserved: ZetaTalk@ZetaTalk.com



[Mail this Page](#) to a Friend.

ZetaTalk: God Concept

Note: written Jul 15, 1996

Humans quite naturally tend to think of their relationship to a god in child-to-parent terms, an outgrowth not only from their impressionable early years but also from their general sense of hopelessness in being able to control their environment. They remain, to a certain extent, a child always, the child within masked by the face of adulthood but inwardly looking to a parent to rescue them or guide them. The concept of a god as something larger and more powerful than the self, who makes things happen, begins in the helpless babe who finds himself cared for whether he asks for it or not, but mostly when he fusses. The concept of prayer is born - I ask and most of the time I receive. Molding the infant's behavior to meet the expectations of the family or social group begins early, with a sharp verbal or physical reprimand when the babe exhibits the wrong behavior. The concept of a punishing god is born.

A careful analysis of the organized religions in human society reveals the child's view toward a parent in almost every aspect. Parents expect the child to contribute to the upkeep around the home by doing chores or handing over their earnings to the parents, and organized religions expect no less from their members. Unquestioning obedience is another parental expectation, most often necessary as during a crisis there is no time to explain to the child why they must follow orders without hesitation. A child putting himself or others in danger must first follow orders and can only ask for an explanation later, if at all. Organized religions take great advantage of this early training, parsing out rules and commandments supposedly coming from a god who cannot be questioned. Rewards for good behavior in most human societies are simply the absence of punishment or privation - do well and you can continue to sleep under the parental roof and sit at the dinner table. Likewise, organized religions phrase the eventual rewards as a right to *belong* as well as avoidance of various punishments.

Conscious, intelligent life throughout the Universe develops the god concept in very similar ways. Any force outside of the control of the self, able to give life by providing sustenance or inclusion in the group or take away life through privation or expulsion or punishment is seen as a god. In human societies attempts to bribe or placate the god naturally follow along the lines of what worked with the parents. If parental rage dissipates when gifts are offered then the god is likewise offered gifts. If the parents are looking to punish a wrong-doer and the children assign one of their number to take this punishment as a scapegoat then likewise the god may be offered sacrificial scapegoats. Kings, wealthy patrons, and visitors from outer space all can fit into the god mold by virtue of their power to affect the lives of the humans in awe of them. For a god concept to emerge, there must also be a sense of helplessness on the part of the supplicant, a sense that they are powerless to affect the outcome except by offering bribes or scapegoats. In this regard, the giant hominoid visitors from the 12th Planet worked their way into many god myths, as they were exacting in their demands for obedience from their slaves, and as hominoids they were easily seen as extensions of a parent.

All rights reserved: ZetaTalk@ZetaTalk.com



[Mail this Page](#) to a Friend.

ZetaTalk: Intelligent Carnivores

Note: written Jul 15, 1996

Evolution in the Universe takes many paths, but all the paths that corporeal life follows require consumption of other living matter. It may be argued that plants and single cell creatures live by absorbing only chemicals and light, and thus sustain themselves in a benign manner, but close examination proves otherwise. Bacteria or virus material considered on the borderline of being living matter, infects and destroys that which they need for nourishment, and the amoebae and protozoa likewise surround and consume foodstuffs they encounter, whether this food be living or not. Plants seem to take in carbon dioxide and light and transform this into sugar. Yet the roots of the plant draw up the nourishment the plants need only because they are embedded in soil moistened in the byproduct of other life, which must die for the plant to grow, and some carnivorous plants don't wait for the donor to die.

At the base of life on planets seeded with DNA are simple chemical reactions that form in ever more complex structures and replicate themselves. Those that replicate successfully become the genes of the future, and those that do not remain as building blocks for the more successful DNA chains. Eating one another starts early. Unlike the spiritual realm, where consumption of one spirit by another is never required and in fact cannot happen, carnivorous behavior is intrinsic to corporeal life. Why God so structured the world in this way is not known, but considering that all forming entities begin their life incarnated, there are certain lessons that are guaranteed. As empathy in some degree is also intrinsic to corporeal life, a conflict between the self and the other is a given. Thus, the *conscious* decision to sacrifice the self is frequently made, and this is the spark that begins development toward the Service-to- Other orientation.

All rights reserved: ZetaTalk@ZetaTalk.com



[Mail this Page](#) to a Friend.

ZetaTalk: Spiritual Density

Note: written by Jul 15, 1995

All humans on Earth are currently in the physical 3rd Density, regardless of how spiritually mature they are. This means that there are humans operating at the level of 4th Density Service-to-Self or Service-to- Others, humans who will graduate to a full 4th Density spiritual existence after the Transformation, who are being kept at the 3rd Density physical plane. All humans, of whatever spiritual level attained, must move together to the 4th Density physical plane when the Earth has reached approximately 89% operating in the Service-to-Others orientation - the Earth's designated future orientation. Even those humans who are spiritually in the 3rd Density, not having completed their orientation lesson, will move to the 4th Density physical plane at that time. This mixing of the spiritual and physical densities is a Transformation necessity. The alternative would be for 4th Density spiritual humans to suddenly disappear one day, having moved to another dimension, so to speak. This would not only alarm other 3rd Density humans in the vicinity, but would not be the choice of those in 4th Density Service-to-Others, who consider their responsibilities. They would not wish to leave behind those they feel responsible for. Thus, all move together.

All rights reserved: ZetaTalk@ZetaTalk.com



[Mail this Page](#) to a Friend.

ZetaTalk: Many Incarnations

Note: written during the Jan 25, 2003 Live ZetaTalk IRC Session.

Humans tend to underestimate the number of incarnations they will have before advancing to light form, the stage where a body no longer is a learning tool. They explore their past lives, digging about with a past life regression therapist, and remember *only* those that are pleasant or put their actions in a good light. The horrific times, or times when they behaved so badly they prefer not to dwell on the matter, are *not* brought forward. The soul, of course, does not forget, but the human consciousness, hearing these tales, discards them and will only allow the pleasant to come through. Incarnations run into the thousands, in the main, before a graduation to 4th Density spiritual is achieved. Nancy is an example of someone who *quickly* made her orientation decision, having done so in a little more than 1,200 lifetimes, but there are others who require 50,000 or more incarnations to firmly decide. Even then, entities may vacillate, and need to *return* to 3rd Density to re-establish this decision.

Thus, most reincarnating entities on Earth have *been* through repeated pole shifts, or horrors of natural disasters equivalent, so this experience is not different and certainly not new. For instance, someone living on a volcanic island, during an eruption, is living through a similar horror. Or someone facing a tidal wave, or a mud slide on steep slopes, buried alive and smothering in liquid mud during their last minutes. Or someone caught in fire, burning alive, whether this is a situation nature or accident causes or done at the hands of man as was the case during the Middle Ages. Certainly, the horrors of the coming shift are no different, no more a learning tool, and *all* situations where the entity has choices allow movement toward determination, final determination, of the 3rd Density lesson, which is the orientation decision.

All rights reserved: ZetaTalk@ZetaTalk.com



[Mail this Page](#) to a Friend.

ZetaTalk: Graduate

Note: written by Jul 15, 1995

What is life like in the 4th Density, and how does this differ from 3rd Density? There is not all that much difference, with a couple of exceptions.

- The similarities are that both densities require a physical body to incarnate into; both densities consume food, require rest, and can be injured; both densities have social structures and arrangements, traditions and cultures; both densities struggle with the balance between the self and the others, seeking to be part of a group while retaining individuality.
- The differences are primarily in the tools available to the entities. You are familiar with the tools in 3rd Density. Your technological advances in communications and medicine are supported by computers and refined raw materials, your knowledge supported by microscopes and reference libraries, etc. In 4th Density these tools are more fantastic, and your mental capacities large enough to utilize them. You will learn levitation, for yourself and objects you wish to move. The data stores of knowledge available to you are extensive, and there is no limitation on your use of them beyond the limitations of time. Perhaps the greatest broadening of your horizon is in the area of travel. You will become galactic travelers, and see the Universe to the extent that your physical body allows. To those worlds with which your physical body is compatible, you will travel quickly, with a speed you cannot imagine now.

All rights reserved: ZetaTalk@ZetaTalk.com



[Mail this Page](#) to a Friend.

ZetaTalk: Transformation

Note: written by Jul 15, 1995

Please understand that the Earth, its waters, its atmosphere, and its fauna and flora are all in 3rd Density today. Only your visitors from other worlds are operating in the density of their origin. During the Transformation, when the composition of the Earth's human population is of a sufficient degree of Service-to-Others, the Earth, along with its water, atmosphere, and fauna and flora and intelligent species, will all move into 4th Density. This movement will be, as they say, transparent to the Earth. Humans will become more mentally aware of others around them, but will not know why. The Earth will not undergo any noticeable changes. The magnetic field, North and South poles, or relationship to the Solar System will not change. Some planets in your Solar System are more 2nd and 3rd Density than 4th, and their character, in relation to the new Earth, will change in that regard. However, this will be minimal.

The Earth will then remain at 4th Density for some time, as this is not a whistle stop, quickly passed. In fact, the opposite is the case. 4th Density is one of the longest densities, much longer than 3rd Density, in fact, because of the many lessons to be learned. We will explain. The single lesson of 3rd Density is positional to other entities, making that determination, the spiritual orientation determination. The 3rd Density entity must decide which orientation they wish to operate in, Service-to-Self or Service-to-Others. Where it might seem to the reader that this issue could be quickly settled, many incarnations are required to come to a final, firm conclusion. The conclusion is not simply intellectual, a choice which could, perhaps, be quickly made. The choice involves all aspects of the entity.

All rights reserved: ZetaTalk@ZetaTalk.com



[Mail this Page](#) to a Friend.

ZetaTalk: Earth Switch

Note: written Jul 15, 1995

Just as living beings, such as ourselves and yourselves, can be in different densities, coexisting in the same spot but being unaware of each other, so planets can and do so coexist. 4th Density planets are not as prevalent as planets in the root density, for obvious reasons. Planets are moved to 4th Density only to support life in 4th Density, and most planets do not have any life at all. So what does the Universe then look like, in 4th Density? Sparse. Imagine your Solar System, its Sun always visible and the orbiting planets among the many stars in the sky. In 4th Density there will be a Sun, but its appearance will be different - not as bright, and more pale. Will astronomers have to adjust to a new night sky? Most certainly, as there will be fewer stars and many of the old guides will be gone. However, as this change will take place shortly after the cataclysms, with all its travails and gloomy cloud cover, any telescopes operational will be useless. Even today, astronomers require a clear night. When the scientific community has regrouped, new maps of the sky will be redrawn, with only an occasional scratch of the head as to why the skies, too, have changed.

- After the switch, humans will be able to look directly at the new 4th Density Sun without distress or injury. Sunburn will be a thing of the past. Where the Sun will be less intense, the winters will be more extreme, creating an Earth with less land mass in a habitable zone. Rather than a steamy equator, the equator will be essentially temperate and the poles will occupy almost half the available surface areas. Lest this seem grim, it should be understood that ice at the poles ties up much water in the form of ice, and the sea level will thus drop several hundred feet. All in all, a good trade off. Since this will occur some 100 years or more after the pole shift this should not affect any humans currently worried about surviving the pole shift. All humans surviving the pole shift will have died, and incarnated safely elsewhere, before this climate change occurs.
- After the switch, humans will find their Moon has traveled with them to 4th Density, as its influence on the tides is something life on Earth has come to rely on and has adapted to. Without the Moon, the many forms of life in tidal pools would die and the cleansing action of washing tides would cease.
- After the switch, humans will find all the plants and animals now on the 3rd Density Earth, their beautiful world, has also moved. The humans of the future, the hybrids we are developing, will not live in a lifeless 4th Density world - spare, bleak, without vegetation, song birds, or fish. Where we will leave some agents of disease behind, the human body will still be subject to stress and degenerative diseases, as well as aging, as all this is inherent in the genetic structure of the human body. Lions and tigers and wolves will also come along, as without predators your wild herds would soon create a population problem. The starvation of many versus the occasional quick kill. Nature will continue as before.
- After the switch humans will find that all humans, whether they have graduated to a 4th Density spiritual plane or not, have moved. For some entities, they will recall living through the cataclysms and then later through a time when humans seemed more mentally connected and in touch with one another. Then, upon death, they will be moved to another 3rd Density world, with others who will share these memories. Back to 3rd Density, to continue their orientation lesson.

All rights reserved: ZetaTalk@ZetaTalk.com



[Mail this Page](#) to a Friend.

ZetaTalk: Left Behind

Note: written Sep 15, 1996

If the Sun moves into 4th Density, will it then leave 3rd Density? Yes. Those portions of the Sun which are inert, used up so to speak, will remain as a gravitational center for the 3rd Density planets orbiting the Sun, including the 12th Planet which is not scheduled to become a 4th Density planet in step with the Earth. With less of a gravitational pull, the 3rd Density planets in your Solar System will move outward, assuming a larger orbit. Life remaining on the surface of the 3rd Density Earth will freeze to death as the surface of the Earth cools under the diminishing rays from a dimming 3rd Density Sun. We will leave some undesirables behind - mosquitoes, for instance, which serve no biological purpose except to feed themselves and support the transport of parasites and disease, and tapeworms, who likewise are not a necessary link in any symbiotic cycle. The agents of many diseases such as a virus, bacteria, fungus, or invading parasite will not be moved during the shift. All these will freeze to death.

Ultimately, even the core of the Earth will cool, the lava hardened, but life underground will continue for some Millennia before the heat at the center of your old home begins to fade. The Men In Black and others coexisting with you now, in underground homes, are not scheduled to move to 4th Density in step with humans living on the surface. The Men In Black and other underground inhabitants will live, for some Millennia, with the impression that your Sun died. Suns do die quickly, and not all have that last glorious burst of life, the Super Nova. Most do not. During the transition to 4th Density there will be enough fuel left in the 3rd Density Sun to give an orderly death. Those on the 12th Planet, looking through their telescopes, will see a fading Sun, not one that winked out suddenly. They will assume that the Earth's Moon was torn away during their passage through the solar system, not unexpected as in truth this is how the Moon was placed as a satellite of the Earth in the first place.

All rights reserved: ZetaTalk@ZetaTalk.com



[Mail this Page](#) to a Friend.



ZetaTalk: Next Stop

Note: written Jul 15, 1997

Those humans who are not ready to leave 3rd Density when they die will *not* reincarnate on Earth. As the Earth is scheduled to become a home for 4th Density entities in the Service-to-Other, these 3rd Density entities will go to a new world elsewhere in the Universe. We are speaking here of spiritual readiness to leave 3rd Density, that the spirits incarnating in these humans have not made their determination whether to be Service-to-Self or Service-to-Other. As we have explained, this is *not* an intellectual choice but rather an emotional choice, and one followed by actions demonstrating that the choice is solid and unwavering. What will this new world be like?

It is a water world, with scarcely a rock or two jutting above the surface of the endless waves. The species on this planet have all evolved from life forms that spend their entire life in the water. Thus, no mammals exist on this planet, since a stint on land, such as occurred in the past for your whales and dolphins, was not possible during their evolutionary past. This world has been a home to incarnating entities for a long time, through several transformations where those ready for 4th Density existence were harvested, leaving those undecided behind. This world has received transplants from other worlds frequently, so there is a broad spectrum of past experiences in the memory of those incarnating there. Humans reincarnating there will find they quickly adjust to living on a water world, having tentacles instead of hands, and tending the occasional batch of eggs.

This planet is carbon based and thus has life forms that have compatible DNA to life forms that have evolved on Earth. Thus, those entities incarnating on Earth in the future will be able to visit this world during their travels as 4th Density entities, acting as alien visitors to this world. Due to their common history, this setup is in fact ideal, as instant empathy would be in place when The Call is given. Humans today receive visitations from 4th Density or higher entities incarnated as water life forms - an octopus, fish, or jelly fish. Visitors adapt to the planet being visited, and thus these visitors from water worlds remain in water tanks during the visit. In the future, visits from Earth to this new water home will require the hominoid visitors to likewise make the accommodations, by wearing protective suits and bubble helmets for breathing.



Below written on Jul 29, 2005 for the bbsradio Radio show, 'Waterworld'.

Humans, being land based animals with hands and digits that can manipulate their environment cannot imagine being an intelligent creature in a water world. Fins? Tentacles? How does one work a keyboard or accumulate a 401K or conduct the equivalent of dentistry as a water creature? Modern civilization has as one of its driving engines electricity, which surely would not work in a water world unless mass suicide were desired. Does knowledge about their history get passed down to the young by the fishy equivalent of world of mouth, as legends? If they have the equivalent of the written word, what is the tablet, and more importantly, what holds the pen? Certainly, the ink could not be water soluble. Issues of warfare do not seem so unimaginable, as mankind has scarcely stepped away from the fist fight as automatic response, and all animals have some sort of defense mechanism, be it fight or flight.

Spiritual growth or spiritual interaction does not require the trappings of modern civilization - electricity, long distance communication, and dentures. Spiritual growth was ongoing during the days of the cave man, and proceeds today in Third World countries where life is scarcely better. In trying to project what life might be like in a waterworld, man should not assume that light is a necessity! Or even eyes. It has been documented that some blind men can read printed words though their skin, sensing some difference in the light emitted. Telepathy, a 6th sense, is used in the animal

kingdom extensively, a method by which mothers communicate to their young, the herd or flock communicates with its members, and mating pairs find each other. For spiritual growth, what is needed is for the incarnated creature to be able to *interact* with each other, to enable another's life, improve it, out of caring, or conversely to punish, intimidate, or starve another out of concern only for the self. Guns and knives and the oppression of debt are not needed to enable or express a Service-to-Self orientation. In a waterworld, snatching food from those weaker, blocking the way so that escape from a threatening situation is delayed, are all tools by which the selfish can demonstrate, by their actions, their chosen orientation. Likewise, opportunities to care for one another are available to every species.

High tech? Is electricity the only medium by which a creature becomes high tech? We have stated that crop circles are laid by water creatures, their only opportunity to participate. Crop circles are made by a ray which incites a growth hormone in the crop, combined with wind action caused by changes in the air over the spot to be swirled. Particle movement is *not* incited simply by the press of electrons. In man's world, heat, light, and electrons seem to go together, but those seeing crop circles laid down have not reported that either heat or light are a necessary component. Perhaps, in their waterworld, they have identified particles to be manipulated that mankind has not yet dreamed exist. Even sound waves, which utilize anything physical around them to be transmitted, can travel long distances, through oceans, being one of the means by which whale pods communicate with each other. If man needs phones or carrier pigeons, whales do not. Status within a society, rules and laws, can certainly be enacted in a waterworld. The dolphin has been noted to swarm to protect their young, or even hapless human swimmers, from danger or attack. What message goes out to the group that their help is required? Is this not a societal expectation known to all? These rules are not written on paper, for the dolphin, they are written in the creature, passed down by interaction, old to young, and are kept simple, devoid of pedantic qualifiers, for that reason. Is this not a better system than the contorted system that man has developed?

All rights reserved: ZetaTalk@ZetaTalk.com



[Mail this Page](#) to a Friend.

ZetaTalk: Homesick

Note: written Jul 15, 1997

Transplanted entities frequently have vague longings for the world left behind. This is particularly true when the circumstances require the entity to live in a radically different life form than the former life form, or where the world presents an environment that is strange. Former humans incarnating in the future on a water world might find themselves with strange longing while they drift around peaks and valleys on the ocean floor, a feeling of *deja vu*. Transplanted entities experiencing strong homesickness are sometimes transplanted *back* to their original home when graduating into 4th Density, if possible. For former humans transplanted to a water world during the Earth's Transformation to 4th Density Service-to-Others, going back home is a real possibility. If they have chosen the Service-to-Others orientation, it would be a simple request quickly honored.

All rights reserved: ZetaTalk@ZetaTalk.com



[Mail this Page](#) to a Friend.

ZetaTalk: Volcano Visits

Note: written Nov 15, 1995

The Earth increasingly shows signs of responding to her brother, the 12th Planet. In addition to unpredictable and extreme weather and increasing earthquake activity, emissions from active volcanoes change in subtle but detectable ways. These emissions give an accurate measure to those who know how to read them. As alien groups in the Service-to-Other are in residence in 3rd Density on the face of your planet, they have an obvious interest in violent geological changes that will tear up their temporary homes. These groups monitor volcanic emissions, both in lava composition and particles in the air, to better predict in the short-term when earthquakes or volcanic eruptions will occur. The rumors that UFO sightings occur frequently near active volcanoes is, therefore, true.

All rights reserved: ZetaTalk@ZetaTalk.com



[Mail this Page](#) to a Friend.

ZetaTalk: Density Lessons

Note: written by Jul 15, 1995

Regarding other densities. We are not allowed to give great detail. The lessons to be learned in each density are different. Just as a child would not stay at the table and eat his vegetables if there were a fire engine screaming by on the street in front of the house, so entities in 3rd Density would not focus on their current lessons if intrigued by the capabilities of higher densities.

- In 4th Density the lesson to be learned is how to live communally with others. This differs depending on orientation. Those in Service-to-Others learn utter trust. We learn to support and communicate with each other to a high degree, so that utter trust is well placed. Those in the Service-to- Self orientation also learn how to depend upon each other, but trust due to the caring and concern of others is not the route. As you might imagine, the rules are extensive and strictly enforced.
- In 5th Density the lessons to be learned are exploration of the universe. The wonders of how the universe is constructed. During 5th Density travel is extensive, and communication with other groups is frequent, where this is not so much the case during 4th Density. Some 5th Density entities incarnate and mingle with 3rd and 4th Density societies, but use these incarnations as a learning tool.
- In 6th Density the lesson to be learned is high knowledge of God's plan for the universe. Here the interaction is less exploratory than stepping in to assume an active role in promulgating God's plan. Information on densities above 6th Density are not allowed at this time. Even we, the 4th Density Zetas, are scarcely informed.

All rights reserved: ZetaTalk@ZetaTalk.com



[Mail this Page](#) to a Friend.

ZetaTalk: Levitation

Note: written by Jul 15, 1995

Levitation is a capacity available to entities in the 4th Density. Basically, this is an ability tied to the mental powers of those in 4th Density. As earlier stated, 4th Density intelligence is much higher than 3rd Density, and not only as measured by IQ. The 4th Density entity can focus gravitational bearings, such that objects, including the self, can be floated. This is simply a convenience used, much as you, in the 3rd Density, take for granted the ability to control the temperature of your living rooms.

All rights reserved: ZetaTalk@ZetaTalk.com



[Mail this Page](#) to a Friend.

ZetaTalk: Disincarnate

Note: written by Jul 15, 1995

Regarding when the advantages of incarnations end. This is a variable time, determined by many factors. Incarnations gain the entity an acute sense of mission. Think of your current density, the 3rd, and your current mission, which is to determine your orientation, Service-to-Self or Service-to-Others. How would a spirit form so decide? What sacrifice is required for Service-to-Others? As you say, easier said than done. The proof is in the pudding. Put your money where your mouth is. In other words, when push comes to shove, the orientation decision of the entity is proved out by life circumstances. In some cases an entity continues to learn through incarnation, even when in a higher density. Incarnations are a learning tool.

All rights reserved: ZetaTalk@ZetaTalk.com



[Mail this Page](#) to a Friend.

ZetaTalk: Photon Belt

Note: written by Jul 15, 1995

Regarding the issue of avoiding the cataclysms. This is often brought up in channeled work. Change your ways, repent, and the future will be different. Catastrophe will be avoided. It's up to you. Is this incorrect? Yes and no. Let us explain.

The Earth, at close to 5 billion people, is approximately 25% Service-to-Other orientation, 7% Service-to- Self orientation, and 68% undecided. These percentages move about a bit. For the Earth to move into 4th Density, the greater part of the populace must be Service-to-Other. We are not talking 51% here, but closer to 89%. During a gradual transformation, this is accomplished by replacement during natural death and birth. The entities incarnating are Service-to-Other, and at a certain point, the planet is ready. Because the Earth undergoes cataclysms, pole shifts, this is taken into consideration by the administrators of your section of the Universe. The Transformation will occur more rapidly.

So why would it be said that the cataclysm can be avoided by behavior changes among humans? If the Earth were to achieve approximately 89% Service-to-Other orientation, *prior* to the cataclysm, the Earth would move into 4th Density *prior* to the reappearance of the giant red comet, the 12th Planet. In 4th Density, the giant comet does not have the magnetic pull that it does in 3rd Density. The effects are lessened, though the general occurrences are the same. Where traumatic, the earthquakes are no greater than experienced today, and the tidal waves no greater than what would be experienced during a hurricane. The reason for the lessened effect is the lighter density. Greater mass has greater gravitational pull.

Some of our brothers, the Pleiadeans and Sirians, have stated that the Earth will enter a Photon Belt soon, at an indeterminate time in the future. Why would this time be indeterminate? Do they not know the location of the Photon Belt, the rate of movement? This time is given as indeterminate because entry into the Photon Belt is not determined by the measurable movements of the planets and the motions of the galaxies. The entry into the Photon Belt is determined by the indeterminate behavior and decisions of humanity. Should the orientation of the Earth progress fast enough, so that the Earth would enter 4th Density, then the Photon Belt would be experienced. As it is, the entry into 4th Density is not expected for some years after the cataclysms, and the Photon Belt effects will be taken into consideration at that time.

All rights reserved: ZetaTalk@ZetaTalk.com



[Mail this Page](#) to a Friend.

ZetaTalk: Vibes

Note: written Oct 15, 1995

A New-Age term much in use is vibes, short for vibrations. It is said of a situation that the vibes weren't right, or the vibes between people weren't right, or that they weren't on the same wave length. In days past it would have been said that people didn't see eye to eye, referring to the fact that tall people got their way with short people more often, but the times are changing. Vibrations are on everyone's mind and for good reason. With the coming Transformation, there *will* be a change in vibration frequency, and many who are on the same wave length now will no longer be able to connect physically with their friends. Where all incarnated on Earth will move to 4th Density simultaneously, those who are to continue in 3rd Density will leave the Earth after death of their physical body and be transplanted on another world, into a new physical body type, far, far away. In addition to being at a distance, and being virtually invisible to one another, the content and focus of the daily lives will differ. 3rd Density is occupied with sorting out Service-to-Self or Service-to-Other decisions, the pros and cons, and living with one's decision long enough to know it to be firm. 4th Density provides entities with more IQ and commensurably with more information. It is an information extravaganza. The Universe begins to be explored, and the memory of 3rd Density seems like a life of ignorance and isolation on a desert island in comparison. The vibes are very different, for more than one reason.

All rights reserved: ZetaTalk@ZetaTalk.com



[Mail this Page](#) to a Friend.

ZetaTalk: Findhorn Garden

Note: written Jul 15, 1997

Invisibility has always tantalized mankind, simply because they have such difficulty being anything *but* visible. They smell, they cannot flatten themselves out of sight like prowling leopards, they are slow moving compared to scampering mice, and they cannot soar above out of sight like a condor. Being invisible seems to offer so many advantages, from escaping notice to being able to snoop, that it has been a favorite focus of much fiction, including the book *The Findhorn Garden*.

All rights reserved: ZetaTalk@ZetaTalk.com



[Mail this Page](#) to a Friend.

ZetaTalk: Intuitive Pets

Note: written Apr 15, 1996

Pets are often the first to signal that a haunting is about to begin. Hair up or feathers fluffed, a defensive stance or perhaps a frantic flight or attempt to hide. They are the harbinger of a discarnate entity, who often is harboring an angry agenda. Likewise tales abound about devoted pets, almost invariably dogs, exhibiting grief shortly after their master has expired. The howling dog, at a distance from the death watch, who somehow knows that his master has left. Pets are not more sensitive than humans, they simply give credence to their awareness of the spirits around them. Animals do not have the brain divisions that humans do, and thus *see* aliens when they are present. If the humans in their presence are not alarmed, they calm down, and we likewise have ways of calming them if they are about to attack. Humans, wanting to stay grounded and to appear level headed, will discount their sense that they are not alone when spirits are about or their sense of being lonelier when spirits have departed. Pets, however, have no such concerns about keeping up appearances, so express their perceptions openly - intuition!

All rights reserved: ZetaTalk@ZetaTalk.com